

# MILILANI NEWS

MILILANI TOWN ASSOCIATION

FEBRUARY 2022

## 2022 MTA BOARD OF DIRECTORS CANDIDATES



ROGER BABCOCK\*



ZACHARY COOPER



WILL KANE\*



JUDY KOSAKA



TRISH LA CHICA



MARILYN B. LEE



NORIKO C. SALANGDRON\*

CANDIDATE PROFILES ON PAGES 5 - 7 | VOTING INSTRUCTIONS ON PAGE 7

\*Indicates incumbent candidate

MILILANI TOWN ASSOCIATION

# BINGO

REC 5

# 3/18

2 TIME SLOTS:  
3:00 PM - 4:30 PM  
6:30 PM - 8:00 PM

TICKETS AVAILABLE  
ONLINE 3/5 AT 8 AM  
ONE TIME SLOT  
PER HOUSEHOLD

See page 17 for more information!

MTA SPRING CRAFT FAIR REGISTRATION NOW OPEN! SEE PAGE 18 OR VISIT MILILANITOWN.ORG FOR MORE INFORMATION

Presorted Mktg  
U.S. Postage Paid  
Honolulu, HI  
Permit No. 985

Mililani Town Association  
95-303 Kaloapau Street  
Mililani, Hawaii 96789



## MILILANI TOWN ASSOCIATION

TREE CITY USA (2018-2020) | 1986 NATIONAL CIVIC LEAGUE ALL-AMERICA CITY

### BOARD OF DIRECTORS

**PRESIDENT** | Bob Barrett  
**VICE PRESIDENT** | Michelle Kidani  
**SECRETARY** | Josie Hart Ka'anehe  
**TREASURER** | Will Kane  
**DIRECTORS:**  
Neil Takeda, Michael Magaoay,  
Noriko Salangdron, Roger Babcock

### MTA STAFF MANAGERS

**GENERAL MANAGER**  
David O'Neal, CMCA, AMS, PCAM  
808-440-2614 | doneal@mililantown.org

**ASSISTANT GENERAL MANAGER  
COVENANTS & DESIGN MANAGER**  
Katherine Cueva, CMCA, AMS  
808-440-2622 | kcueva@mililantown.org

**CONTROLLER**  
Lynelle Tamashiro, CPA, CMCA  
808-440-2636 | ltamashiro@mililantown.org

**AQUATICS & SAFETY MANAGER**  
Kaleo Perreira, CPO  
808-440-2632 | jperreira@mililantown.org

**MEMBER SERVICES MANAGER**  
Laurie Usui, CMCA, AMS  
808-440-2626 | lusui@mililantown.org

**CAFÉ MANAGER**  
Jessica Maclachlan  
808-440-2653 | jmaclachlan@mililantown.org

**LANDSCAPING MANAGER**  
Darryl Barbadillo, ISA Certified Arborist WE-4064A  
808-440-2638 | dbarbadillo@mililantown.org

**MAINTENANCE MANAGER**  
Roy Tashiro, CPO  
808-440-2611 | rtashiro@mililantown.org



### MILILANI NEWS | FEBRUARY 2022

**NEWSLETTER** | Jennifer Suzuki  
808-440-2624 | jsuzuki@mililantown.org

**MARKETING SPECIALIST** | Ronna Derby  
808-440-2618 | rderby@mililantown.org

The Mililani News is a monthly publication of the Mililani Town Association. The publication is used to notify owners of community issues, changes in association policies, scheduled meetings, hearings, programs, classes, special events and activities, and for recognizing MTA members and employees for their achievements and outstanding service. MTA Management has the authority to approve or disapprove editorial submissions, materials, or advertisements. MTA does not endorse and is not responsible for the merchandise or services advertised in this publication. The Mililani News is mailed to residential properties in Mililani. If you are a homeowner who is renting your home to a tenant and live outside of Mililani, or you are a property manager or business owner in Mililani, you are welcome to view the monthly newsletter online. If you are a property owner who would prefer to read the newsletter online, rather than receive it in the mail, call 808-623-7300 or send an email to [jsuzuki@mililantown.org](mailto:jsuzuki@mililantown.org) to have your property address removed from the MTA newsletter mailing list.

## PRESIDENT'S MESSAGE



Welcome to February Mililani! I hope things are well for you this new year! I know I have mentioned it in the past, but I really do enjoy the cooler winter months in Mililani. The beginning of the year was very rainy and there are some very nice qualities to a rainy day. Sometimes it's good to stay indoors and enjoy doing nothing.

At the time of this writing the offices at Mililani Town Association were reopened to the public. I'm hoping that by the time this newsletter hits your mailbox, they are still open, and we are not under further and additional restrictions. In fact, I'm wishing we can open more things up, start our events back up and set our sights on a healthy and normal future.

You will see that the cover of this newsletter will have the candidates for the upcoming Mililani Town Association annual election, in March. Thank you to those incumbent board members and the other candidates that are running. I can tell you, being an MTA board member is very rewarding and it is a great way to give back to our community. You can do your part by voting. Only about 20 percent of our MTA member vote each year. Fill out that ballot when it comes and send it in!

February brings us some very important celebrations, Valentine's Day, Presidents Day and my wife's birthday!

*Aloha,*

**Bob Barrett**  
MTA Board President

a  
latte  
to  
love



## MTA BUSINESS OFFICES

### ADMINISTRATIVE OFFICE

95-303 Kaloapau Street  
Mililani, HI 96789  
808-623-7300  
Fax: 808-623-3474

Open Weekdays 8:00 am - 4:30 pm  
Closed Weekends and Holidays

### REC CENTER 3 BUSINESS OFFICE

95-281 Kaloapau Street  
Mililani, HI 96789  
808-440-2603

Daily: 7:00 am - 9:00 pm

**Last transaction at 8:45 pm**

Cash, checks and credit cards accepted.

### REC CENTER 7 BUSINESS OFFICE

95-1333 Lehiwa Drive  
Mililani, HI 96789  
808-440-2608

Daily: 7:00 am - 7:00 pm

**Last transaction at 6:45 pm**

Cash, checks and credit cards accepted.

### AFTER-HOURS MTA EMERGENCY

808-440-2603

## MEETING SCHEDULE

### MTA BOARD OF DIRECTORS

Third Wednesday of the month  
7:00 pm at Administrative Office  
Conference Room  
President: Bob Barrett  
David O'Neal | 808-623-7300

## CONTACT US

**COMMENT, QUESTION OR CONCERN?**  
**SEND US AN EMAIL!**  
**OR VISIT [MILILANITOWN.ORG/CONTACT](http://MILILANITOWN.ORG/CONTACT)**

[accounting@mililanitown.org](mailto:accounting@mililanitown.org)

- Assessment Accounts & Payments
  - Ownership Changes
- Request for Account Ledgers

[admin@mililanitown.org](mailto:admin@mililanitown.org)

- Facility Rentals
- Disclosure Docs Requests
  - Marketing Questions
- Membership Information
- Independent Contractors
  - Special Events
- Tiny Tots/Senior Program

[aquatics@mililanitown.org](mailto:aquatics@mililanitown.org)

All Questions Regarding:

- Pools
- Aquatic Classes & Programs

[covenants@mililanitown.org](mailto:covenants@mililanitown.org)

All Questions Regarding:

- Rules or violations

[design@mililanitown.org](mailto:design@mililanitown.org)

All Questions Regarding:

- Design applications or to submit design applications

[landscaping@mililanitown.org](mailto:landscaping@mililanitown.org)

All Questions Regarding:

- Landscaping

[payonline@mililanitown.org](mailto:payonline@mililanitown.org)

- Inquiries regarding paying your assessments on our website
- Assistance logging into our online payment system
- Assistance paying your assessments online
  - Assistance setting up automatic payments online

[support@mililanitown.org](mailto:support@mililanitown.org)

- To submit completed Online Registration Access Form – WebTrac
- WebTrac Support





# CENTURY 21®

## iProperties Hawaii RB-21275

From our homes to yours, we wish you a

### Happy Lunar New Year



**Cynthia Allen Hoskins**  
(808) 342-6269  
REALTOR-ASSOCIATE\*  
RS-81277



**Casey D. Aytes**  
(808) 391-5535  
REALTOR-ASSOCIATE\*  
RS-83074



**Christina M. Berry**  
(808) 391-6722  
REALTOR\*, BROKER-IN-CHARGE  
RB-22439



**Bobby Fuke**  
(808) 728-0658  
REALTOR-ASSOCIATE\*  
RS-82868



**Mishon Kawaguchi**  
(808) 222-9954  
REALTOR-ASSOCIATE\*  
RS-83787



**Joe Kindrich**  
(808) 721-9092  
REALTOR-ASSOCIATE\*  
RS-83469



**Thomas Kiyabu**  
(808) 372-4176  
REALTOR-ASSOCIATE\*  
RS-32870



**Abe Lee**  
(808) 216-4999  
REALTOR\*, PRINCIPAL BROKER  
RB-11309



**Barbara H. Pratt**  
(808) 352-9283  
REALTOR-ASSOCIATE\*  
RS-37061



**Sam S. Shin**  
(808) 336-7027  
REALTOR-ASSOCIATE\*  
RS-82088



**Chung-Ju Michelle Wei**  
(808) 221-5386  
REALTOR-ASSOCIATE\*  
RS-83999



**Kendelle Moran-Yamamoto**  
(808) 479-2031  
REALTOR-ASSOCIATE\*  
RS-83103



**Ritsuko Yang**  
(808) 221-9308  
REALTOR-ASSOCIATE\*  
RS-80363



**Eric Yasunaga**  
(808) 295-4653  
REALTOR-ASSOCIATE\*  
RS-78725



## C21 COMMUNITY CORNER

2022 is the year of the Tiger according to the Lunar New Year. Tigers are the third of the Chinese Zodiacs. People born in the Year of the Tiger (1926, 1938, 1950, 1962, 1974, 1986, 1998, 2010, 2022) are known for the following traits\*:

**Vigorous  
Ambitious  
Daring  
Courageous  
Enthusiastic  
Generous**

**Self-confident with a sense of justice**

**Commitment to help others for the greater good**

May we be blessed with the traits of the Tiger as we go through 2022. Our agents at CENTURY 21 iProperties Hawaii are committed to help you with your real estate needs. Let us help you be equipped with the information needed to achieve those real estate dreams.

## DID YOU KNOW?

Our agents can help you support your favorite charity?

Ask us about our

**"Real Estate Rewards Program"**  
by calling us today! Or, visit our website,  
[www.c21ipropertieshawaii.com](http://www.c21ipropertieshawaii.com)  
for more information.

\*source: various websites

Mililani Shopping Center • 95-390 Kuahelani Ave. Suite 2F Mililani, HI 96789

[c21ipropertieshawaii.com](http://c21ipropertieshawaii.com)

Each office is independently owned and operated





**ROGER  
BABCOCK\***

### COMMUNITY PARTICIPATION

Director for Mililani Town Association  
2005-2016 and 2019-2021 (including one year as  
Vice-President and one year as Treasurer)

Current:

Chair, Hawaii Council of Engineering Societies  
Secretary, Mililani Hongwanji Board of Directors

Former:

President, Aloha Aquatics Association

Member, Mililani High School SCC,  
Mililani Middle SCC, Mililani Ike SCC

Assistant Scoutmaster, Boy Scout Troop 664;  
Committee Chair, Cub Scout Pack 864

Member, Mililani AYSO Region 119 Board of Directors;  
Head Coach AYSO Mililani U-8, U-10, U-12

Head Coach Mililani Basketball Association  
7-8, 9-10, 11-12, 13-15

Manager, Waipio Little League

President, Hawaii Section  
American Society of Civil Engineers

President, Hawaii Water Environment Association



***What attracted you to run for the Board  
and why do you feel you would make  
a good director?***

Aloha, my name is Roger Babcock, and I have proudly served as a MTA Director for 15 years. As a Board member and Mililani resident, it is my desire to maintain Mililani as a safe and desirable community in which property values are sustained. By serving on this and other Boards, I have learned about community governance, fiduciary duty, covenants and restrictions, finances, working with employees and contractors, and how to maintain reasonable association fees. I was a professor at the University of Hawaii for 26 years and I am a licensed, practicing Civil Engineer. I am currently the Director and Chief Engineer for the Department of Facility Maintenance at the City. My wife, Jill, and I and our children, Nicholas, Evan and Xander, have lived in Mililani for 18 years and we are proud to call Mililani home. I would be honored to continue to serve on the MTA Board to promote and advocate for our common goals of maintaining and improving our community. Mahalo.



**ZACHARY  
COOPER**

### COMMUNITY PARTICIPATION

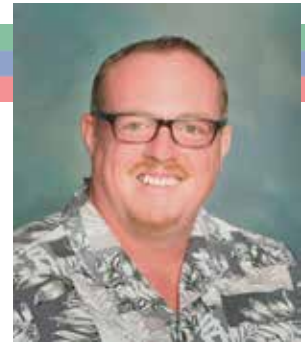
I don't have a long list of accolades or community involvement. I am a Staff Sergeant in the Air Force Reserves, I volunteer at Hanalani Schools where my older son attends school, and I also play tennis through the MTA. I was playing ultimate frisbee with Hawaii Ultimate League Association and looking to get back into competitive golf with the Hawaii State Golf Association, but the pandemic has postponed those plans for now. Mostly, I spend my time in my neighborhood where I spend time with my wife and boys, chat with neighbors, cook, and play uke when time allows.



***What attracted you to run for the Board  
and why do you feel you would make  
a good director?***

Over the course of my life, I have lived in eight different cities in four different states, but I have never felt more at home than I have right here. I have two young boys and I can't think of a better town to have them grow up in. I'm invested in keeping Mililani a great place to raise a family and would like to contribute to that in any way I can.

I believe becoming an MTA board member is the best way for me to make a meaningful contribution to this exceptional community. Though I'm younger than many Board members, I believe that I can bring a unique perspective and contribute in new ways. I spent nearly six years serving in the Air Force as active duty and am continuing my service on island here as a Reservist. I am currently pursuing a degree in Accounting at UH Manoa and, as such, am very financially minded. I believe that my military background and financial awareness will enable me to be a productive member of the MTA Board of Directors and will help keep Mililani Town a great place to raise my children.



**WILL  
KANE\***

### COMMUNITY PARTICIPATION

Mililani Town Association Board of Directors  
Past President/ Current Member

Ku'ulako Community Association - Current Member

Community Associations Institute - Current Member

Honolulu C&C Board of Water Supply  
Stakeholder Advisory Commission

DPH - Member



***What attracted you to run for the Board  
and why do you feel you would make  
a good director?***

Aloha Kakou,

These past couple of years have been challenging for everyone. Covid has affected each and everyone of us. But through it all I have seen how Mililani pulled together as a community. We cared for and supported each other. We came together as one Ohana. This is what first drew me to serve on the MTA Board and it continues to inspire me now.

I am also proud to say that MTA has continued to provide all the programs and access to facilities/ amenities that were allowed. We even completed some planned upgrades at Rec 6, and are planning for a new complex at Rec 3, which will serve all ages, abilities, and interests.

We've implemented an aggressive program to reduce our water and electricity consumption, increase renewable energy production and continue to plant trees and upgrade landscaping across the community. This is designed to not only help our environment, but also to maximize the dues we pay in order to keep costs down.

I would like to continue what we have started, and therefore, I humbly ask that you grant me the opportunity to continue to serve Mililani and its residents.

Mahalo nui Loa,  
Will

# 2022 MTA BOARD OF DIRECTORS CANDIDATE INFORMATION PROFILES



**JUDY  
KOSAKA**

## **COMMUNITY PARTICIPATION**

Armed Forces Communications and Electronics Association (AFCEA)  
American Productivity & Quality Center (APQC)  
American Red Cross (ARC)  
Athletics and Fitness Association of America (AFAA)  
Aquatic Exercise Association (AEA)  
Pacific Whale Foundation  
Sierra Club of Hawaii  
Surfrider Foundation  
Sustainable Coastlines Hawaii  
YogaFit



***What attracted you to run for the Board and why do you feel you would make a good director?***

As a Mililani resident since 1991, I have witnessed immense growth and many positive improvements to our community over the past decade. I raised both my daughters in Mililani and now enjoy watching my grandchildren grow up here as well. With my children grown, I have more time to give to others. It would be an honor to serve to ensure the safety and prosperity of our great community continues.

My current professional responsibilities include website management, planning, and assessments for the US Army. These skills are beneficial to assist in creating a clear and concise plan for our communities' future with measurable goals on how to get there. As homeowner's we want our resources managed effectively and hard earned dollars spent wisely. My involvement in this process will ensure our funds and resources are accountable, spent as intended, and benefit our community as a whole.

My expertise in website management could assist in expanding online services to the already robust website MTA currently provides. By connecting 30,000 plus Mililani residents and homeowners to this source of information will increase our community communications, connections, and involvement. We are better together when our voices are collectively heard and ideas shared.



**TRISH  
LA CHICA**

## **COMMUNITY PARTICIPATION**

15+ years serving in state and county government and not-for-profit organizations in the areas of health, Medicaid, housing, and homelessness  
Community volunteer: Mililani #25 neighborhood board secretary (elected), St. John's Church, Hanalani Schools, 2019 & 2022 Homeless Point-In-Time Count  
Vice Chair, West Oahu Subarea Health Planning Council (Gubernatorial appointee)  
Member, Soroptimist International of Central Oahu  
Public Policy Committee, AAUW Hawaii  
President, Young Democrats of Hawaii  
Chair, Mililani District 36, Democratic Party of Hawaii



***What attracted you to run for the Board and why do you feel you would make a good director?***

Aloha! I humbly ask for your support to serve our community. I am running because the pandemic has highlighted the need for us to redefine how we are truly prioritizing our community. Like many families, I experienced the difficulty of getting information and help out quickly. If elected, I would like to work on improving how we communicate with and act on feedback received from residents, expanding the use of MTA association dues towards a "kokua fund" to give aid or assist with community projects, and creating more engagement activities for our neighbors and families to get to know one another.

I love Mililani and my little family loves this community. Most recently, I led efforts to oppose splitting our district during state and county reapportionment as we are a single community sharing the same resources. I also started a 96789 "Kapu COVID" campaign with community leaders to protect our town and keep our families safe. I believe in demonstrating "grace under fire" as a leader. As a community advocate, I want to let you know that I will always advocate for our beloved community, for the future of our kids, and for all the reasons that make Mililani special.



**MARILYN B.  
LEE**

## **COMMUNITY PARTICIPATION**

Mililani Lions Club-Chaired the Sight is Beautiful and Peace Poster contests this year  
School Community Council Mililani High School present and past 10 years  
Soroptimist International of Central Oahu Past President and present Program Chair  
Friends of Mililani Public Library  
Board of Directors - present Vice President  
Central Oahu Homeless Non-Profit Board of Directors  
Neighborhood Board 25  
present Education Committee Chair  
Appointed to and served two terms on the Hawaii State Commission on the Status of Women  
Member of Christ Lutheran Church, Mililani  
2016 Leader Luncheon Awardee



***What attracted you to run for the Board and why do you feel you would make a good director?***

It would be an honor to serve on the Board of Directors of the Mililani Town Association. My family has deep roots in Mililani and I have worked diligently to improve the lives of citizens in Mililani Town and Mililani Mauka for many years. Serving on the MTA Board would be an opportunity for me to be involved in planning for the future, as well as to share my expertise in community and government service. I am attracted to Board service because of the important work being done by the Board and by the challenges in management of a large organization.

I would be a good director because I am very familiar with the history of our Town as well as with many of the problems faced by neighborhoods, both in Mililani Mauka and Mililani Town. I am keenly aware of the various clubs and service organizations and have good relationships with many Mililani leaders. My long legislative experience and service on the House Finance Committee as Vice Chair gave me insight into the workings of government which affect Mililani in many ways. I am eager to serve you and if elected, will be a conscientious and dedicated MTA Director.



# 2022 MTA BOARD OF DIRECTORS VOTING INSTRUCTIONS

CANDIDATE PROFILES ON PAGES 5 - 7

**THIS MONTH, HOMEOWNERS WILL RECEIVE A PACKET IN THE MAIL CONTAINING:**

Notice of Annual Meeting | Agenda | Candidate Statements  
(A) Official Ballot | (B) Secret Ballot Envelope | (C) Proxy | (D) "Official Ballot Enclosed" Return Envelope

## 1 STEP ONE:

Completely fill in the oval next to the candidate of your choice on the **(A) OFFICIAL BALLOT**.

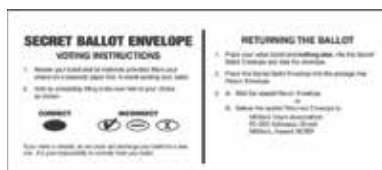
**You may vote for up to four (4) candidates this year. There are four positions open: three (3) for 3 years and one (1) for 2 years.**



(A) OFFICIAL BALLOT

## 2 STEP TWO:

Place your completed **(A) OFFICIAL BALLOT** into the **(B) SECRET BALLOT ENVELOPE** and seal the envelope.



(B) SECRET BALLOT ENVELOPE

## 3 STEP THREE:

Fill out **(C) PROXY** form completely.



(C) PROXY

## 4 STEP FOUR:

Place your sealed **(B) SECRET BALLOT ENVELOPE** and completed **(C) PROXY** form in the envelope labeled **(D) "OFFICIAL BALLOT ENCLOSED"**.



SEALED (B) SECRET BALLOT ENVELOPE



COMPLETED (C) PROXY FORM



(D) "OFFICIAL BALLOT ENCLOSED" ENVELOPE

**MAIL** or **DELIVER** the **(D) OFFICIAL BALLOT ENCLOSED** Envelope

**MAIL TO:**

Mililani Town Association  
PO Box 30562  
Honolulu, HI 96820-9955

**or**

**DELIVER TO:**

MTA Admin Office  
95-303 Kaloapau Street  
Mililani, HI 96789

## DUE DATE & RESULTS

**MUST BE RECEIVED BY THE SECRETARY OF THE ASSOCIATION NO LATER THAN:**  
**4:30 PM • MONDAY, MARCH 14, 2022**

## RESULTS

Results will be announced at the 54th Annual Meeting at Rec Center 3 on March 16, 2022 at 7:00 pm.



**NORIKO C. SALANGDRON\***

## COMMUNITY PARTICIPATION

Mililani Town Association (MTA) Board Director since 2017  
Hawaii Meals on Wheels Mililani Volunteer  
Mililani Disaster Preparedness Team Member  
St. John Apostle and Evangelist Church member in Mililani  
Soroptimist International Central Oahu Club Member  
Scholarship Committee,  
Hawaiian Civic Club of Honolulu  
Hawaii Pacific University, Bachelor of Science  
in Business Administration (BSBA)  
Manage and provides independent financial services  
and administrative support for business and  
non-profit organizations  
Former DOD Financial Manager and member of the  
American Society of Military Comptrollers  
Coached Mililani AYSO Soccer and parent volunteer  
for Pop Warner football & COYBL baseball sports  
Resident of Mililani since 1985



***What attracted you to run for the Board  
and why do you feel you would make  
a good director?***

Aloha! As a current Director, I am grateful for the opportunity to serve our community on the MTA Board. MTA remains committed, to addressing the safety of residents and staff, during this environment with the pandemic. Despite the challenges, the MTA Board members, General Manager, and staff work cohesively to address the needs of Mililani residents. Also, I've been involved with a variety of projects such as energy efficient upgrades, process improvements to register for classes and events, and other upgrades to existing facilities and grounds areas. Additionally, we plan for the future to ensure Mililani stays on the forefront of being the best place to live for you.

As a proud Mililani homeowner for over 30 years, my husband Stanley and I continue to enjoy time in this community; having raised children and are now involved with our grandkids. I will continue to bring a collective perspective into the challenges we face as board members and homeowners, and will work to keep Mililani a safe and distinguished place to live, work and play.

I would be honored for your vote again to continue serving our Mililani community. Please stay safe and MAHALO for your consideration and support!

\*Indicates incumbent candidate



## MTA EMPLOYMENT OPPORTUNITIES

FOR CURRENT JOB OPENINGS  
& APPLICATION DOWNLOAD:  
[MILILANITOWN.ORG/EMPLOYMENT](http://MILILANITOWN.ORG/EMPLOYMENT)

### NEW! ACTIVITIES AIDE

#### Part Time

Assist Tiny Tots, Senior Program Instructors and Special Events Coordinators with MTA's special events, programs and activities. Previous experience in planning and organizing activities and programs preferred. Must possess valid driver's license. Must be available Tuesday, Wednesday and Thursday mornings and for all weekend special events.



### BARISTA

#### Part Time

Provide customers with prompt service and quality products while maintaining a clean and friendly environment. Previous barista or food service experience preferred. Must be available weekdays.

### SWIM INSTRUCTOR

#### Part Time

Provide instruction of swimming lessons and other water related programs and activities.

### LIFEGUARD

#### Part Time

Monitors swimming area activities to prevent accidents and provides assistance to swimmers and members. Must possess current American Red Cross Lifeguard Training, Standard First Aid, and CPR. Lifeguard training available through MTA.

### WANT TO APPLY?

SUBMIT AN EMPLOYMENT  
APPLICATION AND RESUME:

Fax: 808-440-2648 | Attn: Human Resources

Email: [hr@mililantown.org](mailto:hr@mililantown.org)

Mail: 95-303 Kaloapau St. Mililani HI 96789



## STORY TIME

**FEBRUARY 12**

Saturday

8:30 am-10:30 am

- Our STORY TIME is intended for incoming Preschool and Kindergarten students (ages 3-5), for the 2022-2023 school year.
- Children are invited to have story time with our teachers while parents learn about the application process and tour the classrooms.
- Students who apply and enroll at the event will receive 50% off the enrollment fee (\$200 savings).

**TLS-HAWAII.ORG**



We invite you to experience our excellent, standards-based academics, along with daily enrichment such as Art, Robotics, Hawaiian Studies, Band, Choir, Performing Arts, Science Lab, PE, and Coding. Our children deserve a safe learning environment with the freedom to thrive on a balance of high expectations and personalized attention.

Visit our OPEN HOUSE to experience it for yourself!

## OPEN HOUSE

**FEBRUARY 25**

Friday

Grades 1-4, 5:30 pm - 6:30 pm

Grades 5-8, 6:45 pm-7:45 pm

Students who apply and enroll at the event will receive 50% OFF the enrollment fee (\$200 savings).

(808) 621-6033

[office@tls-hawaii.org](mailto:office@tls-hawaii.org)

1611 California Ave | Wahiawa, HI 96786



## AIR CONDITIONING CONTRACTOR

You're not living unless you're COOL LIVING!

**SERVICE • REPAIRS • INSTALLATION**

**RESIDENTIAL & COMMERCIAL**

**WHILE FUNDING LASTS!**

**\$750 OFF** Qualifying Central AC Replacements

**\$75 OFF** Qualifying AC Tune-Up Service

**Up to \$250 OFF** Qualifying VRF Mini Split Systems

**CALL OUR OFFICE TODAY FOR MORE INFORMATION**

Exclusions may apply.



**808-861-7377**

[coollivingllc@gmail.com](mailto:coollivingllc@gmail.com)

[www.coollivingllc.com](http://www.coollivingllc.com)



# HOMEOWNER ASSESSMENTS

The MTA quarterly assessment is collected in accordance with Article VI, Section 6.02 of the Mililani Town DCCR. Assessment due dates are January 1st, April 1st, July 1st, and October 1st in the amount of \$125.00 per quarter (effective April 1, 2020). Quarterly reminder notices are sent to homeowners. A \$10.00 late fee will be charged if payment is not received by the 10th of the month that payment is due.

## THERE ARE 5 WAYS TO PAY YOUR ASSESSMENTS:

1. SurePay Payment Plan - SurePay allows your bank to automatically, electronically transfer your quarterly assessment payments from your checking or savings account through Automated Clearing House (ACH) to MTA. Fill out a SurePay form and turn it in to one of our business offices or send it to [surepay@mililanitown.org](mailto:surepay@mililanitown.org). Submit a voided check with your form.

**DOWNLOAD THE SUREPAY FORM AT:**  
[mililanitown.org/for-residents/assessments/](http://mililanitown.org/for-residents/assessments/)

2. Pay Online - To safely pay your assessment online, homeowners must go through the official MTA website ([www.mililanitown.org](http://www.mililanitown.org)). Once on the official MTA home page, click on "Pay Assessments" in the top menu bar and you will be directed to the online payment page. Payments made through any other website is not recommended and are not guaranteed by MTA.

3. Pay in Person - Payments may be made at the Admin Office, Rec Center 3 or 7 Business Offices during their regular business office hours. Please bring your remittance stub with you when you make your payment.

4. Use Our Secure Drop-Box - There is a drop-box located inside the administration office and is only available during regular business hours.

5. Pay by Mail - To avoid late fees, please allow ample time for mail delivery and for your payments to post as received. Homeowners with multiple properties must submit a

separate remittance stub and payment, for each property address.

- If you are mailing a check with the remittance stub, please mail it to: Mililani Town Association, P.O. Box 29380, Honolulu, HI 96820-1780. This is a "Lockbox" service through Bank of Hawaii. Only the payment will be processed.

- If you are mailing a check without the remittance stub or with the remittance stub and other correspondence or enclosures (such as name or mailing address changes), please mail it to:

Mililani Town Association  
95-303 Kaloapau Street, Mililani, HI 96789

## GO ONLINE!



MTA offers quick & easy ways to make assessment payments online with no fees!

- Make One-Time Payments Online
- Set Up Automatic Credit Card Payments or Text2Pay
- Set Up Text & Email Notifications

**Need Assistance?**

Email: [payonline@mililanitown.org](mailto:payonline@mililanitown.org)

**[MILILANITOWN.ORG/ASSESSMENTS/](http://MILILANITOWN.ORG/ASSESSMENTS/)**

## MTA QUARTERLY ASSESSMENTS SUREPAY AUTOMATIC PAYMENT FORM

**Please use a separate form for each property.**

I authorize the Mililani Town Association to initiate the following action of the account information listed below.

Please check:

<input type="checkbox"/> START	<input type="checkbox"/> January	<input type="checkbox"/> April	<input type="checkbox"/> July	<input type="checkbox"/> October
<input type="checkbox"/> STOP	<input type="checkbox"/> January	<input type="checkbox"/> April	<input type="checkbox"/> July	<input type="checkbox"/> October
<input type="checkbox"/> CHANGE	<input type="checkbox"/> January	<input type="checkbox"/> April	<input type="checkbox"/> July	<input type="checkbox"/> October

MTA BUR Number (10-XXX-XXXX-XX): \_\_\_\_\_

Mililani Property Address: \_\_\_\_\_

Owner's Name(s): \_\_\_\_\_

Mailing Address: (if different from property address): \_\_\_\_\_

Home #: \_\_\_\_\_ Work #: \_\_\_\_\_ Cell #: \_\_\_\_\_

Email: \_\_\_\_\_

I authorize the financial institution below to accept the ACH transfer and change my checking or savings account listed below to pay the quarterly MTA assessment dues.

Account Type: ☐ Checking (voided check required) ☐ Savings

Name of Financial Institution: \_\_\_\_\_

Bank Routing Number: \_\_\_\_\_

Bank Account Number: \_\_\_\_\_

Printed Name of Bank Account Holder: \_\_\_\_\_

Signature of Bank Account Holder: \_\_\_\_\_ Date: \_\_\_\_\_

### SUBMIT A VOIDED CHECK WITH THIS FORM

Drop off, mail, fax, or email application and voided check to:  
Mililani Town Association | 95-303 Kaloapau Street | Mililani, HI 96789 • Fax: 808-623-3474 • Email: [surepay@mililanitown.org](mailto:surepay@mililanitown.org)



**Allyson N. Riter**  
REALTOR®  
RB-20962  
(808) 371-3889



**Bruce W. Yanagihara**  
REALTOR®, BIC | PARTNER  
RB-7869  
(808) 381-3435



**Cameron Chan**  
REALTOR-ASSOCIATE®  
RS-84371  
(808) 561-0642



**Carolina Cristancho**  
REALTOR-ASSOCIATE®  
RS-69298  
(808) 375-1580



**Dan Koyamatsu**  
REALTOR-ASSOCIATE®  
RS-53022  
(808) 542-9750



**Daniel Perez**  
REALTOR-ASSOCIATE®  
RS-81954  
(808) 425-8888



**Darryl Macha**  
REALTOR®, MBIC  
RB-20541  
(808) 352-6458



**Jana Tano**  
REALTOR-ASSOCIATE®  
RS-65985  
(808) 741-1036



**Michelle Takushi**  
REALTOR-ASSOCIATE®  
RS-71963  
(808) 230-4558



**Michelle L. Taniguchi**  
REALTOR-ASSOCIATE®  
RS-61444  
(808) 258-2577



**Paige M. Iwanaga**  
REALTOR-ASSOCIATE®  
RS-62461  
(808) 220-8363



**Priscilla Walthouse**  
REALTOR® | ASSOCIATE  
PARTNER  
RB-21578  
(808) 782-4545



**Richard O. Linke, Jr.**  
REALTOR-ASSOCIATE®  
RS-74730  
(808) 673-8681



**Robyn Kauka**  
REALTOR-ASSOCIATE®  
RS-62625  
(808) 779-6961



**Sandy Takeda**  
REALTOR-ASSOCIATE®  
RS-79515  
(808) 227-2418



**Sheri S Y Murasaki**  
REALTOR-ASSOCIATE®  
RS-71540  
(808) 294-4517



“Thanks to our Locations agent, we sold our home quickly. **So we could buy our dream home even quicker.**”

List your home with your  
**Mililani Neighborhood Experts.**

# Locations



**Joelle Jackson**  
REALTOR-ASSOCIATE®  
RS-60360  
(808) 542-0353



**Karolyne Galam**  
REALTOR-ASSOCIATE®  
RS-63556  
(808) 354-7184



**Kathy Cole**  
REALTOR-ASSOCIATE®  
RS-65577  
(808) 384-5874



**Kimiko May**  
REALTOR®  
RB-20946  
(808) 228-3472



**Lanie Lique**  
REALTOR-ASSOCIATE®  
RS-82024  
(808) 349-2770



**Leesa Fergerstrom**  
REALTOR-ASSOCIATE®  
RS-76263  
(808) 640-9522



**Lindsey Itamoto**  
REALTOR®  
RB-22332  
(808) 927-0148



**Lorelei G R Galanto**  
REALTOR-ASSOCIATE®  
RS-84224  
(808) 389-5480



**Stacey L. Waiwaiole**  
REALTOR-ASSOCIATE®  
RS-69169  
(808) 429-8332



**Susan Dacoscos**  
REALTOR®, MBIC  
RB-23081  
(808) 479-1276



**Ty Y. Takamoto**  
REALTOR-ASSOCIATE®  
RS-78182  
(808) 783-4461



**Wes Murasaki**  
REALTOR-ASSOCIATE®  
RS-82010  
(808) 294-2092

**LocationsHawaii.com**

**STOP BY TODAY: Town Center of Mililani**  
95-720 Lanikuhana Ave. | (808) 625-7100

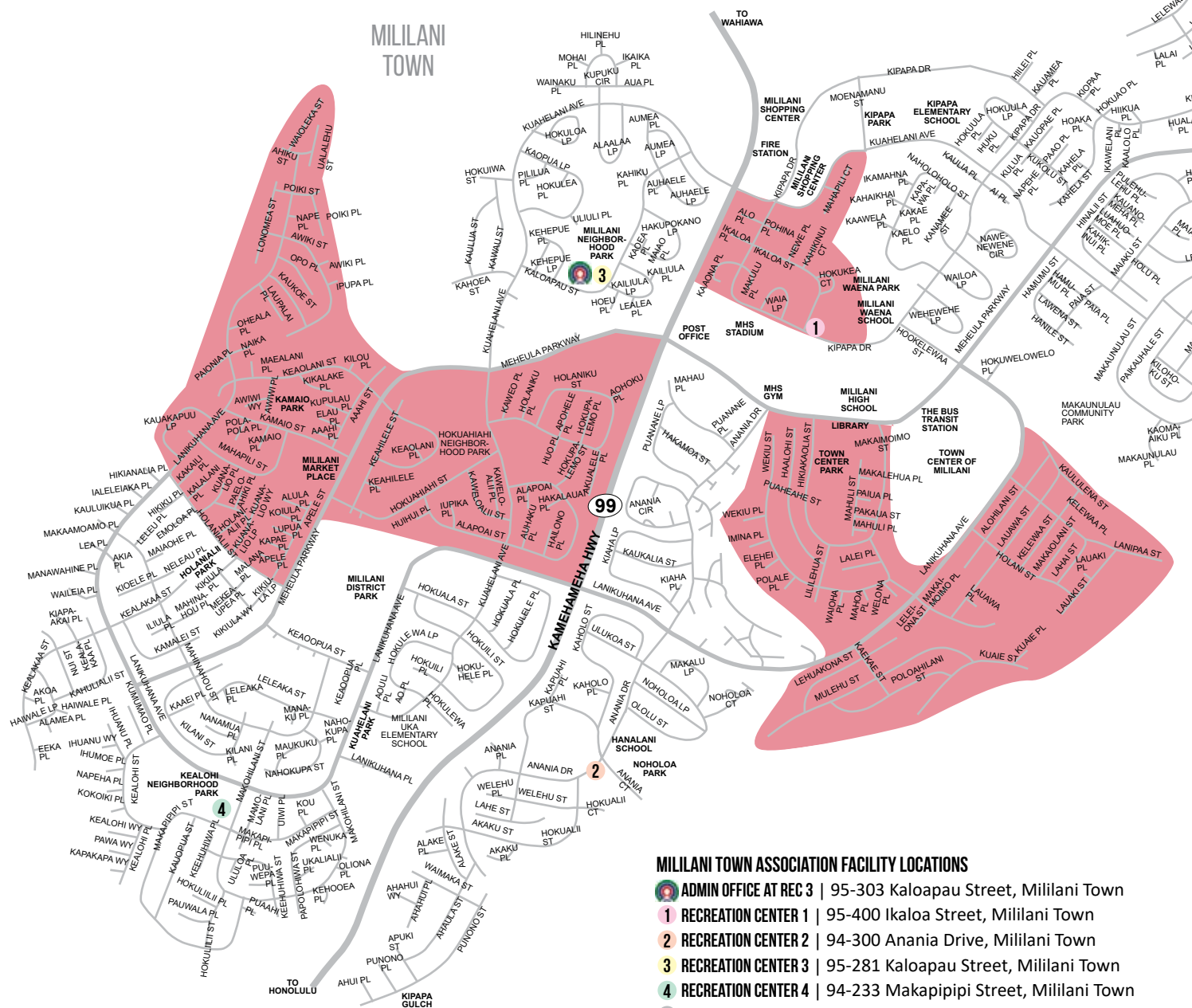
## MONTHLY COVENANTS INSPECTIONS

In an effort to be proactive with our homeowners, MTA wants to inform everyone of the areas that are being inspected each month. The areas highlighted on this map are the areas scheduled for routine Covenant inspections for this month.

We hope to reduce the amount of violation letters we have to send out, by giving you an advance notice of where we will be. We are not trying to do our inspections in secret. We may be seen in an area that is NOT scheduled for a routine inspection. The reason is usually because we have a re-inspection, a complaint or a design project inspection in that area. Please remember, if you have any questions, please feel free to ask. We are very friendly and very willing to talk to you.

**INSPECTION SCHEDULE (Subject to change):****JANUARY | APRIL | JULY | OCTOBER: BLUE MAP****FEBRUARY | MAY | AUGUST | NOVEMBER: RED MAP****MARCH | JUNE | SEPTEMBER | DECEMBER: GREEN MAP**

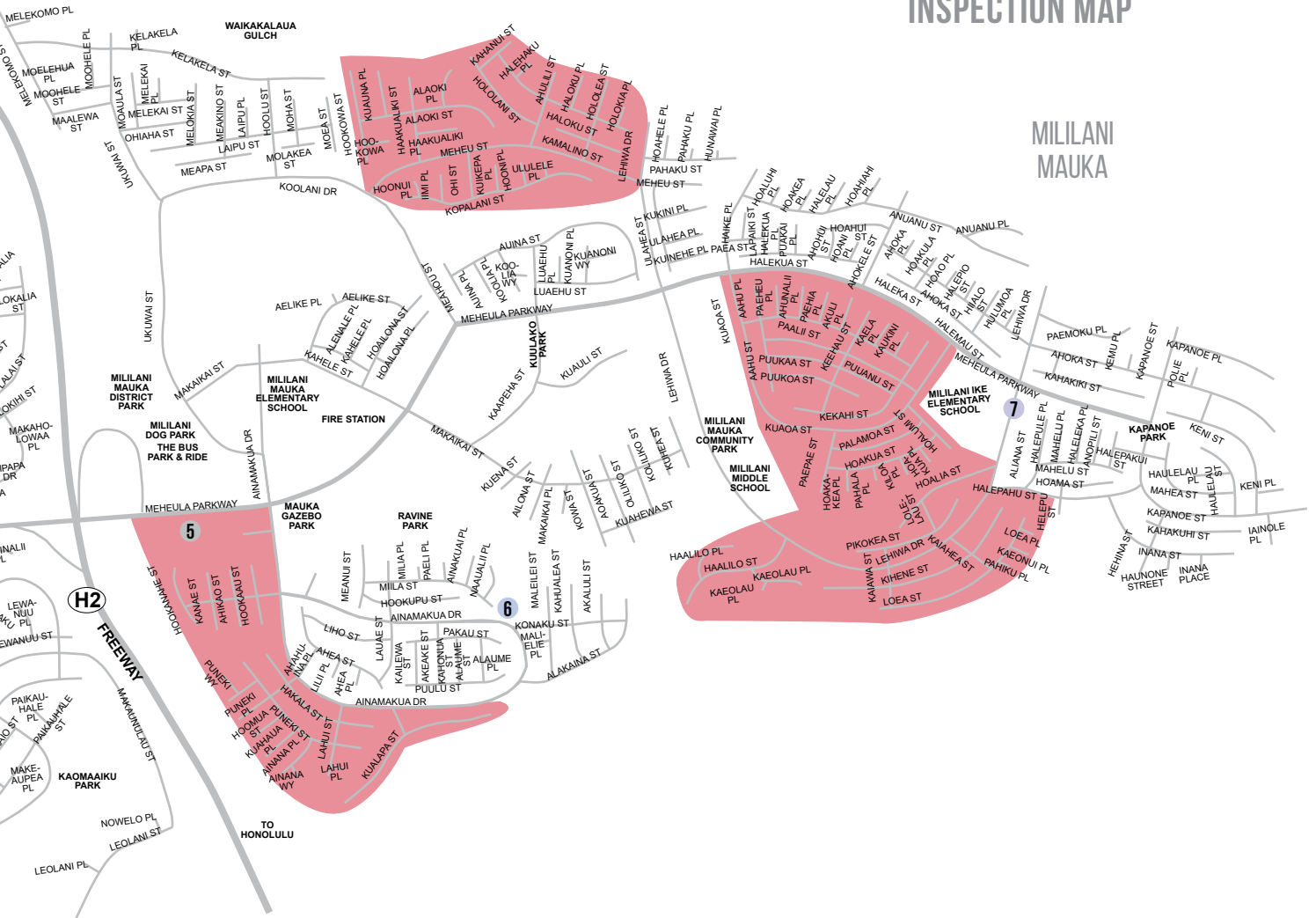
## MILILANI TOWN

**MILILANI TOWN ASSOCIATION FACILITY LOCATIONS**

- ADMIN OFFICE AT REC 3** | 95-303 Kaloapau Street, Mililani Town
- RECREATION CENTER 1** | 95-400 Ikaola Street, Mililani Town
- RECREATION CENTER 2** | 94-300 Anania Drive, Mililani Town
- RECREATION CENTER 3** | 95-281 Kaloapau Street, Mililani Town
- RECREATION CENTER 4** | 94-233 Makapipipi Street, Mililani Town
- RECREATION CENTER 5** | 95-1101 Ainamakua Drive, Mililani Mauka
- RECREATION CENTER 6** | 95-1010 Konaku Street, Mililani Mauka
- RECREATION CENTER 7** | 95-1333 Lehiwa Drive, Mililani Mauka



## FEBRUARY COVENANTS INSPECTION MAP



### FEBRUARY HERBICIDE SCHEDULE

\*Dates subject to change due to weather or other circumstances.

MONDAY	TUESDAY	WEDNESDAY	THURSDAY	FRIDAY
	<b>1</b> Herbicide under hedges Meheula between Marketplace and Keaopua St.	<b>2</b> Herbicide under hedges Meheula between Keaopua St. and Lanikuhana	<b>3</b> Herbicide under hedges Meheula between Lanikuhana and Keaopua St.	<b>4</b> Herbicide under hedges Kuahelani between Lanikuhana and Hokuahiahi St.
<b>7</b> Herbicide under hedges Kuahelani between Kaopua Lp. and Alaala Circle, between Kaloapau and Kupuku Circle	<b>8</b> Herbicide under hedges Anania Dr.	<b>9</b> Herbicide under hedges Anania Dr.	<b>10</b> Herbicide under hedges Makaunulau	<b>11</b> Herbicide under hedges Makaunulau
<b>14</b> Herbicide under hedges Makaunulau	<b>15</b> Herbicide under hedges Ainamakua Dr.	<b>16</b> Herbicide under hedges Ainamakua Dr.	<b>17</b> Herbicide under hedges Ainamakua Dr.	<b>18</b> Herbicide under hedges Ainamakua Dr.
<b>21 HOLIDAY</b> President's Day	<b>22</b> Herbicide under hedges Kapanoe between Meheula and end of Kapanoe both sides	<b>23</b> Herbicide under hedges Kuaoa between Meheula and end of Kuaoa, both sides	<b>24</b> Herbicide on ground covers Rec 7	<b>25</b> Herbicide on ground covers Ukuwai between Koolani and Kelakela St.
<b>28</b> Herbicide on ground covers Ukuwai between Kelakela and District Park				



Mililani Dentists

## McGraw & Bellanca DDS

Family and Cosmetic Dentistry

We Welcome New Patients/Military  
Participating Providers with HDS,  
HMSA, and United Concordia Tricare

### Cosmetic Dentistry

If you worry about the appearance of your smile, then worry no more! We offer the latest cosmetic dental techniques available to meet all your unique needs, including veneers, teeth whitening, cosmetic bonding and dental implants.

### Teeth Whitening

Your teeth will darken over time. Changes in the color of your teeth can be caused by such factors as the food and beverages consumed (like coffee, tea and soda).

### Smile Makeovers

Our office uses the latest general dental techniques to correct all your dental problems. Our experienced staff works together as a team to provide you with a Smile Makeover in order for you to have a great smile.



To make an appointment visit  
[www.MililaniDental.com](http://www.MililaniDental.com)

or call (808) 623-9881

Mililani • Schofield  
95-390 Kuahealani Ave. #4  
Mililani Shopping Center

## YOUR NEIGHBORHOOD SPECIALTY SHOE STORE

We carry wide width shoes & a variety of arch supports for all needs

Try Before you Buy, Feel the Difference

Conveniently Located in Waipio & Aiea

(808) 488-6588

[runnershi88@gmail.com](mailto:runnershi88@gmail.com)

Waipio: 94-1235 Ka Uka Blvd | Aiea: 98-390 Kam Hwy

Mon - Fri: 10-6 | Sat - Sun: 10-5

# RUNNER'S HI

OAHU • HAWAII

[RUNNERSHI.NET](http://RUNNERSHI.NET)



## Get \$50

## Open a Savings, Checking & Debit Card\*

[www.HawaiiStateFCU.com/promo](http://www.HawaiiStateFCU.com/promo)

A **better** place to bank,  
might not be a bank.

NEW  
MEMBER  
PROMO



## HAWAII STATE

FEDERAL CREDIT UNION

*always right by you*

\*Ten (10) posted net purchase transactions with a HSFCU debit card within 30 days of checking account opening are required to qualify. Or open a new checking account with a direct deposit within 60 days of account opening. Annual percentage yields as of September 1, 2020, are as follows: Regular Savings: 0.07%, Simple Checking: 0.00%, Dividend Checking: 0.05%, Relationship Checking: 0.05% for balances up to \$9,999.99, 0.05% for balances \$10,000 to \$24,999.99, 0.05% for balances \$25,000 to \$49,999.99 and 0.10% for balances \$50,000+.

Payment will be made to the savings account within 90 days after meeting conditions. APYs and offer may change at any time. Offer applies to new members only. Limit of one per member. Payment subject to 1099 reporting requirements.

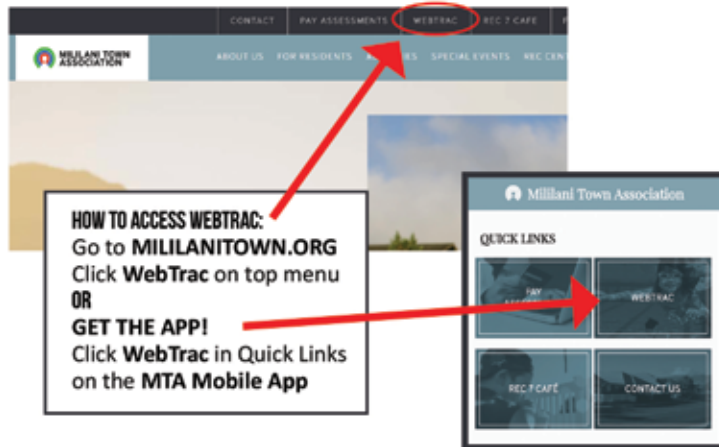
Federally insured by NCUA



# WEBTRAC 101: LEARN HOW TO NAVIGATE WEBTRAC FASTER & EASIER!

## WHAT IS WEBTRAC?

WebTrac is a system that will enable you to register you and your household members on-line for programs and activities offered by Mililani Town Association.



## WHAT CAN I DO WITH WEBTRAC?

- Browse activities by type, age range, rec centers...
- Look up details about any activity (prices, dates, times, locations...)

## WHAT TYPE OF RESERVATIONS AND CLASSES CAN I SIGN UP FOR?

- Pickleball and Tennis Courts • Facility Rentals • Lap Swim Lanes
- Pavilion Rentals • Aquatics Programs • Pool Party Rentals
- Water Aerobics Punch Cards • **SPECIAL EVENTS TICKETS**
- Tiny Tots Program • Women's Exercise Class

## IN ADDITION, WEBTRAC ALLOWS REGISTERED MEMBERS TO:

- **RENEW MEMBERSHIP** (without going to the Business Office!)
- Print a transaction history
- Reprint old receipts

Download for WebTrac Access Form also available at [mililantown.org](http://mililantown.org)  
(See Quick Links under WebTrac Member Login)

## FAQ

Any additional questions regarding WebTrac or WebTrac registration can be emailed to:  
[support@mililantown.org](mailto:support@mililantown.org)

### FREQUENTLY ASKED QUESTIONS

#### HOW DO I GET A USER NAME AND PASSWORD?

If you are a Mililani Town Association property owner, fill out a WebTrac Access Form (see form below or get one online at [mililantown.org](http://mililantown.org)). Submit completed & signed form via email to [support@mililantown.org](mailto:support@mililantown.org), fax it to 808-623-3474, mail it to Mililani Town Association (Attn. IT Department, 95-303 Kaloapau Street, Mililani, HI 96789) or drop it off at the Business Office at Rec 3 or Rec 7.

#### WHAT IF I HAVE FORGOTTEN MY USER NAME OR PASSWORD?

Click on "Forgot your password" below the Member Login. It will ask for your email address and a link will be sent to it. You must use the email address associated with your account.

#### ARE MY TRANSACTIONS SECURED?

Yes. WebTrac uses a secure server with industry-standard encryption to process all transactions.

#### WHAT CREDIT CARDS DO YOU ACCEPT FOR ONLINE PAYMENTS?

We accept Visa, MasterCard or Discover.

#### IF I DO NOT LIVE IN A MILILANI TOWN ASSOCIATION PROPERTY, CAN I STILL SIGN UP FOR WEBTRAC?

No. You must be a Mililani Town Association Owner or Tenant (head of household).

#### WHAT TIME DOES LAP SWIM LANES, PICKLEBALL AND TENNIS COURTS OPEN FOR RESERVATIONS?

6:00 a.m. Keep in mind, you are only able to reserve three days out.

#### DOES MY CARD HAVE TO BE VALID IN ORDER TO MAKE A RESERVATION?

Yes. If it expired, you may renew it online under **MY ACCOUNT**.

### Mililani Town Association Online Registration Access Form | WEBTRAC

Name: \_\_\_\_\_  
*Only the primary household member will be accepted*

Property Address: \_\_\_\_\_

Email Address: \_\_\_\_\_  
*Only ONE email per household*

SIGNATURE: \_\_\_\_\_

Date: \_\_\_\_\_

Phone Number: \_\_\_\_\_

#### SUBMIT FORM:

**EMAIL** Email a scanned pdf or use your phone and email us a picture of the completed form to [support@mililantown.org](mailto:support@mililantown.org)

**MAIL** Mililani Town Association | Attn. IT Department | 95-303 Kaloapau Street | Mililani, HI 96789

**FAX** 808-623-3474

**DROP OFF** Admin Office (95-303 Kaloapau Street), Rec 3 Business Office (95-281 Kaloapau Street) or Rec 7 Business Office (95-1333 Lehiwa Drive)

#### For Office Use Only:

Staff Initial: \_\_\_\_\_ Date: \_\_\_\_\_





# COMMUNITY SPONSORS

Mahalo to the Mililani Town Association Community Sponsors: **Locations Hawaii, Hamada Financial Group, Graham Builders and Corcoran Pacific Properties** for generously supporting our 2022 calendar of Special Events!

With the anticipated return of MTA events like BINGO, Easter Egg Hunt, Spring Craft Fair and Senior Fair scheduled for the first half of 2022, we look forward to providing our community with fun and exciting ways to get to know your friends and neighbors.

## MAHALO TO OUR SPONSORS!

**Locations**  
Welcome Home  
808-625-7100  
LocationsHawaii.com

**HFG**  
HAMADA FINANCIAL  
GROUP, LLC  
808-888-9985  
HamadaFinancialGroup.com

**Graham**  
BUILDERS  
808-593-2808  
GrahamBuilders.com

*corcoran*  
PACIFIC PROPERTIES  
808-589-2040  
CorcoranPacific.com

## UPCOMING EVENTS

**MARCH 18**

**BINGO**

2 Time Slots Available  
See page 17 for more information

**APRIL 9**

**Easter Egg Hunt**

**APRIL 23**

**Spring Craft Fair**

See page 18 for vendor registration information

**MAY 18**

**Senior Fair**

**JUNE 3**

**BINGO**



Note: Event photos taken pre-pandemic.

**BINGO**



# MILILANI TOWN ASSOCIATION BINGO

Sponsored By:



**TIMES Supermarket**

**Susan Yanabu Ihle - STATE FARM Agent**

**Melissa Maino - HUMANA Agent**

**WALMART of Mililani**

REC 5

**3/18**

2 TIME SLOTS:  
3:00 PM - 4:30 PM  
6:30 PM - 8:00 PM



**TICKETS AVAILABLE ONLINE 3/5 AT 8 AM**  
**ONE TIME SLOT PER HOUSEHOLD**



Note: Event photos taken pre-pandemic.

**6 ROUNDS OF FUN**  
**+ BLACKOUT PRIZE**  
**FREE FOR MTA MEMBERS**

One time slot per household.

Ticket required to receive BINGO packet. One packet per person.

Player must be present to receive packet. FREE for MTA Members only.

For ticket availability & more information please visit [mililanitown.org](http://mililanitown.org).

**MILILANI  
TOWN  
.ORG**

**HEALTH & SAFETY NOTICE: HEALTH & SAFETY NOTICE: NO FOOD WILL BE ALLOWED AT THIS EVENT.**  
Drinks allowed. All attending and staff will be required to wear masks during this event and to follow current State/City & County of Honolulu requirements or other safety measures set by MTA. All events are subject to change or cancellation.

2021

*Holiday Giveaway*

Congratulations to our  
lucky giveaway winners!  
We hope it brought a little  
holiday cheer!

**\$500 Winners**

Jason H. Higa • Frances Chun  
Bernard van Steenbrugge • Maelynn Puchalski

**\$250 Winners**

Ana Lisa Phifer • Angela Baker • Janie Apao  
Rosalie Baldugo • Richard Hung • Aileen Gushiken  
Leesean Silva • Leona Sewake • Clint Souza • Kelli Iida  
Jonathan Bagasol • John Silva Jr. and Irene Silva

**Mahalo to our Sponsors!**

*corcoran*

PACIFIC PROPERTIES



**THE QUEEN'S  
MEDICAL CENTER**  
WEST O'AHU

**Locations**

Welcome Home



Bank of Hawaii

Pacific Lifestyle Properties

Kapili Roofing & Painting

Hawaii State Federal Credit Union

Susan Yanabu Ihle, State Farm Agent

Larry Bolibol, State Farm Agent

All prizes for this giveaway were  
generously provided by our sponsors.



# SAVE \$700

On Any Complete Interior or Exterior Paint Job

Not to be combined with any other special offer.

Residential & Commercial Painting  
Interior & Exterior Painting • Carpentry &  
Drywall Repairs • Concrete Restoration

At C&B Quality Painting, we are here to provide you with the best possible services to complete your project on time and on budget.

We are committed to being Mililani's premiere painting company and have been servicing this great town of Mililani for 18 years!



**Clint Souza, Owner**

Contractor's Lic. # C-26872

**808-625-9411**

95-883 Makeauepa Pl. • Mililani, Hawaii

**cbqpainting.com**



Licensed | Insured | Bonded



Proudly  
Sponsored  
By:

**JACO**

## MTA CRAFT FAIRS ARE BACK

Vendor registration for our SPRING CRAFT FAIR is NOW OPEN.

For agreement & application download, visit:

[mililantown.org/special-events/](http://mililantown.org/special-events/)

**VENDOR REGISTRATION DUE:  
FEBRUARY 22, 2022**

Questions?

Contact Jenn Suzuki at [jsuzuki@mililantown.org](mailto:jsuzuki@mililantown.org)

[mililantown.org](http://mililantown.org)

Night Fair

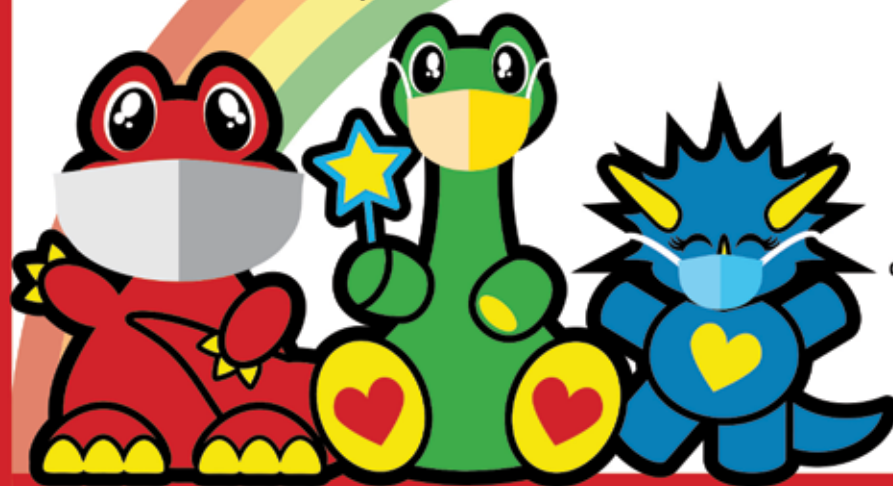


WEBTRAC

MILILANI TOWN ASSOCIATION

# TINY TOTS

Tues & Thurs | 8:30 am - 10:30 am at Rec 5



TINY TOTS PROGRAM RETURNS FEBRUARY 2022



Open to Children 18 months to 4 years old

With the help of an adult, children will enjoy play time, circle time, arts & crafts, pool & park days, field trips and meeting new friends! This program offers a safe, fun and educational stepping stone to preschool.

ONLINE REGISTRATION IS ONGOING  
\$70 per month for MTA Members  
Minimum: 15 participants

Call 808-623-7300

to ask about observing a class before signing up.

MASKS REQUIRED • NO FOOD ALLOWED • PLEASE BRING YOUR OWN WATER BOTTLE

FOR MORE INFORMATION VISIT: [MILILANITOWN.ORG/ACTIVITIES/FOR-TOTS/](http://MILILANITOWN.ORG/ACTIVITIES/FOR-TOTS/)

## DRIVE THRU COVID TESTING PROVIDED BY TIMES PHARMACY

BY APPOINTMENT ONLY

APPOINTMENTS AVAILABLE ON  
Mondays • Wednesdays • Fridays • Saturdays • Sundays  
9:00 am - 3:00 pm

LOCATION: Mililani Rec 6 | 95-1010 Konaku Street



If current appointments are booked,  
additional dates/times may be added.  
Please check back for availability.

\*Dates, appointments, availability subject to change or cancellation.

TO BOOK AN APPOINTMENT - SCAN QR CODE OR VISIT:

**ALOHACLEAR.COM**

## MILILANI TOWN ASSOCIATION SENIORS PROGRAM



Mililani residents, 55 and over, with a valid MTA ID card are welcome to participate.

**Activities Include:** Game days, cultural activities, informational seminars, holiday celebrations, pool and park days, service projects, arts & crafts and more!

**THIS IS A FREE PROGRAM FOR MTA MEMBERS.**

To register before your first session, present your valid MTA ID at the Admin Office.

**WE'LL BE  
BACK SOON!**



MTA SENIOR PROGRAM RETURN DATE: TBA



# Discover

how your child will thrive at Hanalani

Our innovative classes, competitive athletics and vibrant arts give students many ways to shine.



**Grades Pre-K - 12**

**Join us at Open House**

Get a waiver code to apply for free!

RSVP today!



**Sat. Feb. 12**  
9 am - 1 pm



Hanalani Schools

**808-625-0737 x 456**  
**admissions@hanalani.org**

Financial aid available

[f @hanalanischools](#) [@hanalaniroyals](#) [@hanalani](#) [hanalanischools](#)

## Aluminum Shake Roofing Inc. Coolerest Roof in Hawaii!



- Authentic beauty of hand split wood shakes without the problems of traditional wood
- Number one aluminum shake on the market when compared to Great American and Rustic Shakes
- Passed UL 580 testing, simulating wind speeds of up to 200 MPH
- Will not burn -- Protects against flying embers from fires
- Completely walkable
- Can Save up to 25% on Energy Bills
- Made from 99% Recycled Aluminum

**Specializing in the installation of Country Manor Shakes for over 30 years in Hawaii**

*Lifetime Manufacturers Warranty*

Call for a FREE Estimate

**808-847-8885**

**aluminumshakerroofing.com**

BC-15135

## MEMBERSHIP POLICY

To access MTA's Recreation Centers, participate in programs, classes and/or attend Special Events, members must obtain a valid MTA membership card.

The Owner listed on the property must submit an "Owner's Membership Information" form acknowledging that those listed are residing at the homeowner's property address.

The Member Services Department will be reviewing accounts. Proof of residency at the MTA property address may be required. An "Affidavit of Residency" will need to be signed in front of a Notary Public stating that the listed residents are permanently living with the Owner at the property address.

Misrepresentation of facts to obtain membership may result in the rescinding of MTA membership cards and/or suspension of privileges for the member(s) of the respective MTA property.

If there are any changes to your household, please submit an "Owner's Membership Information" form to update your account.

**You may find the form on our website at:**  
[www.mililantown.org/](http://www.mililantown.org/) FOR RESIDENTS/  
FORMS/Homeowner Management





# MEMBER SERVICES

## MTA FACILITY AMENITIES & FEATURES

Rec Center	Business Office	Hall Rental	Pool Rental	Meeting Room Rental	BBQ Pavilion Rental	Swimming Pool	Kiddie Pool	Pool Amenities	Tennis & Pickleball	Basketball Court	Volleyball Court	Picnic Area	Ping Pong	FREE Wi-Fi	Other
1		★	★			★	★	Jet Spa Water Slide				★		★	
2		★	★	★		★	★	Heated Saline		Outdoor		★	★	★	Tot Lot
3	★	★	★			★		Saline	★				★	★	
4			★			★	★							★	Splash Park, Tot Lot
5		★												★	
6		★	★			Handicap Lift		Jet Spa						★	
7	★				★	Walk-In Ramp	★	Heated Saline Jet Spa		Indoor Gym	Indoor Gym	Covered Seating	★	★	Rec 7 Cafe, Tot Lot, Family Room, Internet Cafe

## FACILITY INFORMATION

For complete facility schedule, holiday hours and closures see page 23 or visit [mililanitown.org](http://mililanitown.org)

### ADMIN OFFICE

95-303 Kaloapau Street | Mililani Town

**Located next to Rec 3**

Tel: 808-623-7300 | Fax: 808-623-3474

Open Weekdays 8:00 am - 4:30 pm

Closed Weekends and Holidays

### MTA MAILING ADDRESS

95-303 Kaloapau Street | Mililani, HI 96789



### REC CENTER 1

95-400 Ikaola Street | Mililani Town

Tel: 808-440-2601



### REC CENTER 2

94-300 Anania Drive | Mililani Town

Tel: 808-440-2602



### REC CENTER 3 | BUSINESS OFFICE

95-281 Kaloapau Street | Mililani Town

Tel: 808-440-2603

Business Office Open Daily: 7:00 am - 9:00 pm

**Last office transaction at 8:45 pm**

Cash, checks and credit cards accepted



### REC CENTER 4

94-233 Makapipipi Street | Mililani Town

Tel: 808-440-2604



### REC CENTER 5

95-1101 Ainamakua Drive | Mililani Mauka

Tel: 808-440-2605

For Rental Information, See Page 25



### REC CENTER 6

95-1010 Konaku Street | Mililani Mauka

Tel: 808-440-2606



### REC CENTER 7 | BUSINESS OFFICE & CAFÉ

95-1333 Lehiwa Drive | Mililani Mauka

Tel: 808-440-2608

Business Office Open Daily: 7:00 am - 7:00 pm

**Last office transaction at 6:45 pm**

Cash, checks and credit cards accepted



## MTA MEMBERSHIP CARDS

Only one Member card is needed for your entire household. This will eliminate the need to purchase individual cards for everyone in your household.

No pictures or expiration date will be printed. A picture will still need to be taken for our RecTrac system only. At your convenience, please stop by any Recreation Center or Business Office to take your pictures.

### MTA MEMBERSHIP ID CARD FEES:

**New Card \$6.50 | 1 Year Renewal \$5 | Additional Cards \$2**

**Don't forget a picture ID for verification.** You may also take a picture of the barcode on the back of the card with your phone in lieu of purchasing an additional card.

## MTA GUEST PASS

Guests will be required to have a Guest Pass, good for one day, with a fee of \$10 per pass (each individual needs a pass).

This pass is good for the entire day it is used, at any MTA Rec. Center as long as the guest is accompanied by the member at all times.

Guest Passes may be purchased at Rec 1, 2, 4, 6 (credit card only), Admin Office or Business Offices at Rec 3 and 7.



### CAFÉ HOURS

SUN - THURS: 7 AM - 7 PM

FRI & SAT: 7 AM - 8 PM



# PACIFIC LIFESTYLE PROPERTIES

RB-22902

*Our specialty is listening and caring  
for all your real estate needs -  
buying, selling, investing, relocating,  
property management and more!*



**Ward Soto (R)**  
ABR AHWD CNE e-PRO MRP  
Principal Broker  
License #RB-22593  
**808-372-7299**  
wardsoto.PLP@yahoo.com



**Leona E. Soto (R)**  
CRB CRS e-PRO GRI MRP SFR SRES  
Broker-in-Charge  
Notary Public  
License #RB-12430  
**808-780-2170**  
leonasoto@aol.com



**Ronald Thames (RA)**  
GRN GRI SRES  
License #RS-59717  
**808-778-8223**  
ronthamesc21@hawaii.rr.com



**Jenny Antonio (RA)**  
License #RS-46913  
**808-479-3783**  
jejuantonio@gmail.com



**Kyle Matsumiya (RA)**  
License #RS-63552  
**808-864-3421**  
matsumiyk002@hawaii.rr.com



**Maria Francis (RA)**  
License #RS-70425  
**808-699-0718**  
maria96797@gmail.com

## CALL US FOR A FREE CONSULTATION!



## KAPILI ROOFING & PAINTING

"Building Peace of Mind,  
One Roof at a Time!"

**Call us for a free estimate!**  
**(808) 621-ROOF**  
**(808) 621-7663**  
**www.kapiliroof.com**

Full Roofs • Repairs • Interior & Exterior Painting • Free Inspections

- Fully Licensed, Bonded, & Insured. In business for over 10 years!
- Friendly, highly credentialed CertainTeed 5 Star Installers on staff providing a 25 year workmanship, 50 year non prorated material warranty!
- Locally family owned and operated out of Central Oahu!
- Combine your roofing & painting services for a bundled discount!
- Exceptional value, and unbeatable quality!

# HAWAIIANMiles.

Earn up to 40,000 bonus Hawaiian Miles on your  
re-roofing or re-painting project!\*

Lic. #C-28938, CT-21890

\*Some restrictions apply.

### FACILITY CAPACITY GUIDELINES:

As of 12/1/2021 - Covid related capacity limits have been removed. This is subject to change based on current guidelines.

## LAP SWIM • TENNIS/PICKLEBALL COURT ONLINE RESERVATIONS



Reservations may be obtained at the MTA **WebTrac** website via **mililitantown.org**

**RESERVATIONS ARE LIMITED**

Reservations open at 6:00 am each day  
Reservations can be made up to 3 days in advance  
Reservation system is down between 11:00 pm – 6:00 am



**REC 3 PICKLEBALL**

**PICKLEBALL COURTS 1 & 3:**

For singles or double play ONLY - No round robin  
All other Pickleball Courts are open play and *do not* require reservations.

**LIMIT:** One (1) court reservation per household, per day



**REC 3 TENNIS COURTS**

**TENNIS COURT 2:**

Open for singles/doubles

**LIMIT:** One (1) court reservation per household, per day



**LAP SWIM @ REC 7**

**POOL LANES (LAP SWIM)**

**LIMIT:** Two (2) lap swim reservations per household, per day

For any cancellations, questions or concerns regarding online reservations, please call the reservations hotline at:

808-440-2633 or 808-440-2608

\*Reservation availability, duration & times are subject to change.



# FEBRUARY 2022 FACILITY SCHEDULE

Changes indicated with RED text  
\*Facility schedule & closures are subject to change

## HOLIDAY HOURS & CLOSURES\*

**FEBRUARY 10 | THURSDAY**

Rec 7 CLOSED until 2:00 pm

**FEBRUARY 21 | MONDAY**

Holiday: President's Day

Admin Office CLOSED

\*Facility closures & hours are subject to change.

## COVID ANNOUNCEMENT REGARDING FACILITY USAGE:

At the Mililani Town Association, our priority is the health and safety of our ohana. As our facilities become available, we will continue to follow City & County of Honolulu and State requirements regarding closures and safety precautions.

Please visit [mililanitown.org/news](http://mililanitown.org/news) or the MTA Mobile App for current facility availability, holiday hours & other information.

We appreciate your patience and understanding.

FACILITY	SUNDAY	MONDAY	TUESDAY	WEDNESDAY	THURSDAY	FRIDAY	SATURDAY
REC 1	95-400 Ikalooa Street   Mililani Town   808-440-2601						
Swimming Pool	POOL   JET SPA   WATER SLIDE CLOSED FOR MAJOR REPAIRS UNTIL FURTHER NOTICE Rec 1 Hall is available for rentals & classes						
Jet Spa							
Water Slide							
REC 2	94-300 Anania Drive   Mililani Town   808-440-2602						
Swimming Pool Heated	Lap Swim 7 am - 12 pm	Lap Swim 7 am - 12 pm	Closed for Maintenance Until 12 pm	Lap Swim 7 am - 12 pm	Lap Swim 7 am - 12 pm	Lap Swim 7 am - 12 pm	Lap Swim 7 am - 12 pm
	1/2 Lap   1/2 Open Swim 12 pm - 7 pm	1/2 Lap   1/2 Open Swim 12 pm - 7 pm	1/2 Lap   1/2 Open Swim 12 pm - 2:45 pm	1/2 Lap   1/2 Open Swim 12 pm - 6 pm	1/2 Lap   1/2 Open Swim 12 pm - 2:45 pm	1/2 Lap   1/2 Open Swim 12 pm - 9 pm	1/2 Lap   1/2 Open Swim 12 pm - 9 pm
			Swim Lessons 3 pm - 7 pm	Water Aerobics 6 pm - 7 pm	Swim Lessons 3 pm - 7 pm		
Basketball Court & Tot Lot	Free Play 7 am - 7 pm	Free Play 7 am - 7 pm	Free Play 12 pm - 7 pm	Free Play 7 am - 7 pm	Free Play 7 am - 7 pm	Free Play 7 am - 7 pm	Free Play 7 am - 7 pm
REC 3	95-281 Kaloapau Street   Mililani Town   808-440-2603 Rec 3 Business Office Open Daily: 7 am - 9 pm   Last Transaction at 8:45 pm						
Swimming Pool Saline	Open Swim 10 am - 6 pm	Water Aerobics 9 am - 10 am	Closed for Maintenance Until 10 am	Water Aerobics 9 am - 10 am	Water Aerobics 9 am - 10 am	Open Swim 7am - 6 pm	Open Swim 10 am - 6 pm
		Open Swim 10 am - 3 pm	Open Swim 10 am - 6 pm	Open Swim 10 am - 3 pm	Open Swim 10 am - 6 pm		
		SN/LTS Water Therapy 3 pm - 6 pm		SN/LTS Water Therapy 3 pm - 6 pm			
Tennis Courts Pickleball**	7 am - 9 pm	7 am - 9 pm	7 am - 9 pm	7 am - 9 pm	7 am - 9 pm**	7 am - 9 pm	7 am - 9 pm
**Closed from 10 am - 2 pm on the last Thursday of the month							
REC 4	94-233 Makapipipi Street   Mililani Town   808-440-2604						
Swimming Pool	Open Swim 7 am - 7 pm	Open Swim 7 am - 7 pm	Open Swim 7 am - 7 pm	Open Swim 7 am - 7 pm	Open Swim 7 am - 7 pm	Closed for Maintenance Until 12 pm Open Swim 12 pm - 7 pm	Open Swim 7 am - 7 pm
Splash Park & Tot Lot	7 am - 7 pm	7 am - 7 pm	7 am - 7 pm	7 am - 7 pm	7 am - 7 pm	12 pm - 7 pm	7 am - 7 pm
REC 6	95-1010 Konaku Street   Mililani Mauka   808-440-2606 *Rec 6 Pool subject to closure during Hall Rentals.						
Swimming Pool	Lap Swim 7 am - 7 pm	Lap Swim 7 am - 3 pm	Lap Swim 7 am - 3 pm	Closed for Maintenance Until 12 pm Lap Swim 12 pm - 3 pm	Lap Swim 7 am - 3 pm	Lap Swim 7 am - 7 pm	Lap Swim 7 am - 7 pm
		Junior Masters 3 pm - 4:30 pm 4:30 pm - 6 pm	Aloha Aquatics 3 pm - 5 pm	Junior Masters 3 pm - 4:30 pm 4:30 pm - 6 pm	Aloha Aquatics 3 pm - 5 pm		
		Lap Swim 6 pm - 7 pm	Lap Swim 5 pm - 7 pm	Lap Swim 6 pm - 7 pm	Lap Swim 5 pm - 7 pm		
Jet Spa	7 am - 7 pm	7 am - 7 pm	7 am - 7 pm	12 pm - 7 pm	7 am - 7 pm	7 am - 7 pm	7 am - 7 pm
REC 7	95-1333 Lehiwa Drive   Mililani Mauka   808-440-2607 Rec 7 Business Office Open Daily: 7 am - 7 pm   Last Transaction at 6:45 pm						
Swimming Pool Heated Saline Handicap Accessible Walk-In Ramp	Swim Lessons 8 am - 11 am	Lap Swim 7 am - 9:45 am	Lap Swim 7 am - 9:45 am	Lap Swim 7 am - 9:45 am	Closed for Maintenance Until 12 pm	Lap Swim 7 am - 9:45 am	Swim Lessons 8 am - 11 am
	Open Swim 11 am - 7 pm	Water Aerobics 10 am - 11 am	Water Aerobics 10 am - 11 am	Water Aerobics 10 am - 11 am	1/2 Lap   1/2 Open Swim 12 pm - 6 pm	Water Aerobics 10 am - 11 am	Open Swim 11 am - 9 pm
		1/2 Lap   1/2 Open Swim 11 am - 7 pm	1/2 Lap   1/2 Open Swim 11 am - 6 pm Water Aerobics 6 pm - 7 pm	1/2 Lap   1/2 Open Swim 11 am - 7 pm	Water Aerobics 6 pm - 7 pm	1/2 Lap   1/2 Open Swim 11 am - 9 pm	
Jet Spa	11 am - 7 pm	7 am - 7 pm	7 am - 7 pm	7 am - 7 pm	12 pm - 7 pm	7 am - 9 pm	11 am - 9 pm
Gym	Basketball   Group Play 7 am - 11 am	Basketball   Free Play 7 am - 11 am	Volleyball 7 am - 7 pm	Basketball   Free Play 7 am - 4 pm	Volleyball 7 am - 7 pm	Basketball   Free Play 7 am - 4 pm	Basketball   Group Play 7 am - 11 am
	Basketball   Free Play 11 am - 7 pm	Volleyball Noon - 7 pm		Basketball   Group Play 4 pm - 7 pm		Basketball   Group Play 4 pm - 9 pm	Basketball   Free Play 11 am - 9 pm
Other	Outdoor Seating, Family Room, Ping Pong, Tot Lot : Sunday - Thursday: 7 am - 7 pm   Friday & Saturday 7 am - 9 pm Café: Sunday - Thursday: 7 am - 7 pm   Friday & Saturday 7 am - 8 pm						

# Performance Plumbing

808-852-1575

## SERVICES WE PROVIDE:

- Residential & Commercial
- Repair/Replace Fixtures
- Water Heater Replacement
- Water Filtration Systems
- Manabloc/Pex Repairs/Replacement
- Bathtub to Shower Conversion



- Video Camera Inspection
- Hydro Jet Drain Cleaning
- Water Leak Detection
- Certified Backflow Testing
- Certified Plumbing Inspection
- And so much more...

performanceplumbinghi.com



Blane Furuta-Owner  
License #C-32480

Signatory Contractor Local Union 675  
Plumbers and Fitters

PO Box 894773  
Mililani HI 96789

## IMPORTANT NOTICE REGARDING FACILITY RENTALS

Effective December 1, 2021, capacity restrictions for large events have been lifted.

Along with operating at full capacity, these events will be allowed to serve food and drinks in compliance with the **SAFE ACCESS OAHU PROGRAM**.

### SAFE ACCESS OAHU PROGRAM:

All guests and vendors will need to provide proof of **FULL VACCINATION**:

- A hard copy of state approved vaccination card **OR**
- Photo of state approved vaccination card **OR**
- A Hawaii State-approved digital/smart application confirming full vaccination status (must include name)

- OR -

A negative COVID-19 test within 48 hours of event

- A negative or "not detected" test result must be a U.S. Food and Drug Administration emergency use authorization, or approved molecular test, or antigen test taken within 48 hours (Must include name and date/time of test)
- At-home COVID-19 test **WILL NOT BE ACCEPTED**

Vaccination card or negative test result must be accompanied with a picture ID for verification (Drivers License, State ID, Military ID, School ID, Work ID or other identification with picture and name).

Children 11 years old and under are **EXEMPT**.

Masks must be worn (except when eating or drinking).

**A Generations**

**LEEWARD ROOFING**  
& GENERAL CONTRACTING

**50th Anniversary**

(808) 696-7660  
LIC NUMBER CT-32740

NAT 921022-1



SUBSCRIBE TO US ON YOUTUBE.

Let our family take care of your family. A roof done right is water tight.

Before



After



**We Service all Commercial and Residential.**

**\*Gutters:** We fabricate and install seamless gutter systems customized to fit your home or business.

**\*Roof Repairs:** We specialize in a variety of repairs from missing shingles to disaster response and emergencies. We're here to protect your family and your investment.

**\*Reroofing and New Roofs:** With 50 years of experience comes great workmanship, timely completion, and minimal disturbance to the client. Our team can handle all aspects of your project by streamlining permits, environmental testing, and demolition all while upholding a safe and pristine jobsite.



(808) 696-7660



**HAPPY VALENTINE'S DAY**



**UPDATE: Hall Rentals to restart January 2022. Rec Centers 1, 3, 5 & 6 are available. Please visit mililantown.org or see page 24 for current SAFE ACCESS OAHU PROGRAM requirements regarding Hall Rentals. Thank you for your patience & understanding.**

## FACILITY RESERVATIONS

ONLINE FACILITY RESERVATIONS ONLY | WEBTRAC

HALL RESERVATIONS							
Rec	Address	Max Capacity	Hall Rental	Pool (Optional)*	Lifeguard Fee*	Tables	Chairs
1	95-400 Ikaloa Street   Mililani Town	130	\$450	\$75 Waterslide NOT Rentable	\$20/Hour per every 35 people in pool area	29	146
	SATURDAY: 3:00 pm – 10:30 pm (Party 5:00 pm – 10:00 pm)   SUNDAY: 8:00 am – 3:00 pm (Party 10:00 am – 2:00 pm) OR 3:00 pm – 10:30 pm (Party 5:00 pm – 10:00 pm)						
3	95-281 Kaloapau Street   Mililani Town	230	\$550	\$100	\$20/Hour per every 35 people in pool area	42	247
	FRIDAY: 3:00 pm – 10:30 pm (Party 5:00 pm – 10:00 pm)   SATURDAY: 3:00 pm – 10:30 pm (Party 5:00 pm – 10:00 pm) SUNDAY: 8:00 am – 3:00 pm (Party 10:00 am – 2:00 pm) OR 3:00 pm – 10:30 pm (Party 5:00 pm – 10:00 pm)						
5	95-1101 Ainamakua Drive   Mililani Mauka	350	\$730	N/A	N/A	72	355
	FRIDAY: 3:00 pm – 10:30 pm (Party 5:00 pm – 10:00 pm)   SATURDAY: 3:00 pm – 10:30 pm (Party 5:00 pm – 10:00 pm) SUNDAY: 8:00 am – 3:00 pm (Party 10:00 am – 2:00 pm) OR 3:00 pm – 10:30 pm (Party 5:00 pm – 10:00 pm)						
6	95-1010 Konaku Street   Mililani Mauka	200	\$550	\$100	\$20/Hour per every 35 people in pool area	40	210
	FRIDAY: 3:00 pm – 10:30 pm (Party 5:00 pm – 10:00 pm)   SATURDAY: 3:00 pm – 10:30 pm (Party 5:00 pm – 10:00 pm) SUNDAY: 8:00 am – 3:00 pm (Party 10:00 am – 2:00 pm) OR 3:00 pm – 10:30 pm (Party 5:00 pm – 10:00 pm)						

POOL ONLY RESERVATIONS   CURRENTLY UNAVAILABLE				
Rec	Address	Capacity	Pool Rental	Lifeguard Fee
2	94-300 Anania Drive   Mililani Town	1 Lifeguard <b>REQUIRED</b> for every 35 people	\$150	\$20/Hour per every 35 people in pool area
3	95-281 Kaloapau Street   Mililani Town	1 Lifeguard <b>REQUIRED</b> for every 35 people	\$100	\$20/Hour per every 35 people in pool area
4	94-233 Makapipipi Street   Mililani Town	1 Lifeguard <b>REQUIRED</b> for every 35 people 2 Lifeguards <b>REQUIRED</b> at Rec 4	\$100	\$20/Hour per every 35 people in pool area

**\*REGARDING POOL RESERVATIONS & LIFEGUARDS:** All reservations for the use of a swimming pool will require payment for the services of MTA lifeguards. One lifeguard is required for every 35 people in the pool area regardless if they are swimming or not. A minimum of two MTA lifeguards are required at Rec 4 regardless of the headcount. Lifeguards must remain on duty as long as there are people in the pool area. There is no "grace-period" for setting-up or clean-up for swimming pool rentals. Flotation tubes and pool toys are provided by MTA at Recs 3 and 4. The Rec 1 Waterslide will not be available during pool rentals.

## REC 2 MEETING ROOM RENTAL

## Rec 2 Meeting Room: \$20/hour

Tables and chairs are provided. Renter must be an adult and an MTA homeowner listed on the property deed or an MTA tenant listed as "Head of Household" in MTA's database.

## REC 7 BBQ PAVILION RENTAL

## Rec 7 Pavilion Rental Fee: \$50 per Pavilion

Reservations open a year-to-date in advance and are taken on a first come, first served basis.

The maximum capacity of each pavilion is twelve people. Same day back-to-back advance reservations are not allowed.

Alcohol, tents, extra tables, amplified music, machines, bouncers, and vendors are prohibited. All pavilion users must exit the recreation center at the end of the reservation.

**No refunds are given for cancellations.**

## PAVILION HOURS

## SUNDAY - THURSDAY

Day Rentals: 10:00 am - 2:00 pm  
Evening Rentals: 3:00 pm - 7:00 pm

## FRIDAY &amp; SATURDAY

Day Rentals: 10:00 am - 2:00 pm  
Evening Rentals: 4:00 pm - 8:00 pm

**Rental availability & capacity are subject to change due to pandemic mandates.**



**BUILDING ISLAND HOMES WITH  
OUTSTANDING QUALITY  
AND EXCEPTIONAL SERVICE!**  
Contact Us for a **FREE Estimate**



**SHOW US YOUR PLANS OR WE'LL HELP  
WITH DESIGN/BUILD CONSTRUCTION!**



**COMPLETE RENOVATIONS  
KITCHEN & BATH REMODELING  
HOME ADDITIONS • HOME REPAIRS  
PREMIER PACKAGE HOME BUILDER • SPECIALIZING IN ADU**



**808-235-6212**

**ESTIMATING@AULICONSTRUCTION.COM**

## AQUATICS PROGRAMS

**WEBTRAC**

### KIDS LEARN TO SWIM

#### REGISTRATION

**MTA Member registration for the  
April 2022 - May 2022 Session**

**Pre-school through Level 6:**

**Friday, March 25, 2022  
Starting at 8 am ONLINE**



**Registration:** Due to the popularity of the Kids Learn-to-Swim classes, a registration date is set for each 2-month session. Payment is due upon registration.

**Kids' Learn to Swim Class Rules:** Parents may observe classes from the deck seating areas only. No one is allowed in the swimming or wading pools except the class participants and instructors. We discourage parents from interfering with classes by talking to their child, yelling words of encouragement, reprimanding or making gestures. Parents, who have children 11 years old and under need to be present for the entire swim class. Parents are responsible for escorting participants to and from the lesson area.

**ATTENTION:** If your child is not registered for the appropriate level and the correct level he/she belongs in is full, your money will be refunded, you will be taken off the roster and you will be put on the wait-list.

### FEBRUARY - MARCH KIDS' LEARN TO SWIM SESSION 2/3/2022 - 3/22/2022

#### **TUESDAY & THURSDAY (14 classes)**

Dates: 2/3/2022 - 3/22/2022

Afternoons: 3:00 pm, 4:00 pm, or 5:00 pm

Place: REC 2

Fee: \$160 for MTA Members

#### **SATURDAY & SUNDAY (14 classes)**

Dates: 2/5/2022 - 3/20/2022

Mornings: 8:00 am, 9:00 am, or 10:00 am

Place: REC 7 (heated pool)

Fee: \$160 for MTA Members

#### **SATURDAY ONLY (7 classes)**

Dates: 2/5/2022 - 3/19/2022

Mornings: 8:00 am, 9:00 am, or 10:00 am

Place: REC 7 (heated pool)

Fee: \$80 for MTA Members

#### **SUNDAY ONLY (7 classes)**

Dates: 2/6/2022 - 3/20/2022

Mornings: 8:00 am, 9:00 am, or 10:00 am

Place: REC 7 (heated pool)

Fee: \$80 for MTA Members

**New Construction • Re -Roof • Repair • Maintenance**

**ON TOP  
ROOFING LLC**

Lic #29849

**808-304-4007**

**OnTopRoofingHawaii.com**



**On Top Roofing is Affordable, Honest & Guarantees Workmanship 100%**

#### **Specializing In:**

- Asphalt Shingles with Top Certifications
- Tiles, Brai
- Carpentry Repair
- Shakes, Oiling
- Metal & Copper Roofing
- Wood Shingles
- Coating

#### **Combine Your Roofing & Solar Services To:**

- Avoid scheduling problems
- Keep roof warranty intact
- Save Money! Equipment is already there



Owner is a Mililani resident & MTA Member

Call 808-304-4007 for a  
**FREE ESTIMATE!**



**Leak Repair • 24 Hour Emergency Service • Insurance Claims**





WEBTRAC

## SPECIAL NEEDS LTS/WATER THERAPY

Participants would need to have any of the following; special needs, behavioral problems, diagnosed on the autism spectrum or interest in water therapy or rehabilitation. While operating under temporary COVID 19 restrictions, participants who need assistance and participants who are learning to swim must be accompanied by a parent or guardian in the water. The instructor will be teaching from outside the water; parents or guardians will be taking directions from the instructor and will be hands on with their participant.

Classes are 30 minutes. 7 classes per month. Registration opens the 2nd Monday of every month for returning participants. Returning participants time slots will be held until the following Monday. Registration will open on the 3rd Monday at 10 am for all new participants, and all unpaid spots will become available.

### MONDAY & WEDNESDAY (7 classes)

Time: 3:00 pm, 3:30 pm, 4:00 pm, 4:30 pm  
5:00 pm, 5:30 pm  
Place: REC 3  
Fee: \$125 for MTA Members



WEBTRAC

## JUNIOR MASTERS

Participants, ages 8-17 years old, work on stroke refinement and endurance necessary to become proficient swimmers. This program is a non-competitive alternative to swim teams.

Prerequisite: Participants must have passed Level 6 and must present their MTA report card during registration. If the interested participant did not attend MTA's swim programs, please contact the Aquatics Manager to set up a swim test. Interested participants must be able to perform the back and front crawl stroke, breaststroke, butterfly, and open and flip turns.

### MONDAY & WEDNESDAY

Time: Novice: 3:00 pm - 4:30 pm | REC 6  
Novice/Adv.: 4:30 pm - 6:00 pm | REC 6  
Fee: \$80 for MTA Members

WEBTRAC

## ONE ON ONE LEARN TO SWIM

Registration for March session will be open Wednesday, February 2, 2022 online through WEBTRAC at 8:00 am.

Classes will be 1:1 with an instructor for 25 minutes. All participants welcome from basic water adjustment through stroke refinement skills. Instructors will teach to each participant's abilities. Registration is ongoing month to month. Spots will not be held for prior month's participants. Registration will open the first Wednesday every month for the following month. Participants must be at least 2 ½ years of age.

Dates: 2/3/2022 - 2/24/22  
Days: Tuesday/Thursday (7 classes)  
Times: 6:00 pm (Limited to 6 spots) | REC 2  
6:30 pm (Limited to 6 spots) | REC 2  
Fee: \$150 for MTA Members

WEBTRAC

## ADULT WATER AEROBICS

Participants of all fitness levels will enjoy water workouts to improve strength, balance, endurance and flexibility. Classes are led by a fitness instructor and are conducted to music, both in waist-to-chest deep water and in deep water. Must be at least 18 years old to participate. **Classes are not held on holidays.**

### MONDAY, WEDNESDAY & THURSDAY

Time: 9:00 am - 10:00 am | REC 3

### MONDAY, TUESDAY, WEDNESDAY & FRIDAY

Time: 10:00 am - 11:00 am | REC 7

### TUESDAY & THURSDAY

Time: 6:00 pm - 7:00 pm | REC 7

### WEDNESDAY

Time: 6:00 pm - 7:00 pm | REC 2

### Punch Card Prices (with MTA Card)

1 Class:	\$3.50	14 Classes:	\$35
2 Classes:	\$6	25 Classes:	\$60
9 Classes:	\$25		



**NOTICE REGARDING JET SPAS:**  
Jet Spas are CLOSED during Aquatics Programs.  
Thank you for your understanding.

Adult Learn to Swim & Parent Aid classes are temporarily unavailable. Please check the newsletter or [milaninitown.org](http://milaninitown.org) for availability updates. Thank you for your patience & understanding.

## WAIT LISTED CLASSES

Please call (808) 623-7300 to be put on a waitlist for the following classes:

### ADULT LEARN TO SWIM

Must be 18 years old or older.

Classes are 45 minutes long. Participants are taught to be safe and comfortable in the water using basic water skills and fundamental strokes. Participants of all levels are welcome.

Fee: \$70 for MTA Members

### PARENT AID

Classes are for infants and toddlers (8 months – 3 years old) accompanied by an adult.

Parents are taught how to build their child's confidence and skill levels. Participants will work on water entry and exit and water exploration. Parents will work with participant on water skills such as bobbing with blowing bubbles, floating on their front and backs, and introduce beginner skills such as kicking and sculling.

Classes are 30 minutes one-on-one parent and child with an instructor teaching in a group setting. There will be 25 minutes of water exploration, shared individual time with the instructor, and free play immediately after.

Fee: \$100 for MTA Members

### LIFEGUARD CERTIFICATION CLASS

Must be 15 years old or older.

This is an American Red Cross certification course in Lifeguard Training, First Aid, and CPR/AED for the Professional Rescuer.

Fee: \$185 for MTA Members, \$200 for non-members

### CPR FOR SCHOOLS & THE COMMUNITY

Must be 15 years old or older.

This is an American Red Cross certification course. Participants in this course learn to recognize and respond to emergencies.

Fee: \$50

FOR MORE INFO REGARDING MTA AQUATICS PROGRAMS, VISIT:

[MILANITOWN.ORG/NEWS](http://MILANITOWN.ORG/NEWS)



# HAWAII'S #1

Voted First Place

FIRST PLACE  
HAWAII'S  
**BEST**  
2020  
Awarded by the Star Advertiser

**MAHALO!!**



Locally owned since 1974, Akamai Roofing Inc. is Hawaii's trusted leader in residential roofing.

- Complete Re-Roofing
- Energy-Efficient Roofing Options

- Restoration and Maintenance
- Gutter Servicing



**AKAMAI**  
ROOFING INC.

Discounts For  
Gutter and Roof  
Combos!

Contact Us TODAY  
for a FREE Estimate!!

**(808) 486-5555**  
akamairoofinginc.com

Lic. No. BC-24362

## CONTRACTOR CLASSES

### IMPORTANT NOTICE REGARDING CONTRACTOR CLASSES

Independent Contract Classes will be in compliance with the **SAFE ACCESS OAHU PROGRAM**.

#### SAFE ACCESS OAHU PROGRAM:

All guests and vendors will need to provide proof of **FULL VACCINATION**:

- A hard copy of state approved vaccination card **OR**
- Photo of state approved vaccination card **OR**
- A Hawaii State-approved digital/smart application confirming full vaccination status (must include name)

- OR -

A negative COVID-19 test within 48 hours of event

- A negative or "not detected" test result must be a U.S. Food and Drug Administration emergency use authorization, or approved molecular test, or antigen test taken within 48 hours (Must include name and date/time of test)

• **At-home COVID-19 test WILL NOT BE ACCEPTED**

Vaccination card or negative test result must be accompanied with a picture ID for verification (Drivers License, State ID, Military ID, School ID, Work ID or other identification with picture and name).

Children 11 years old and under are **EXEMPT**.

Masks must be worn at all times.

## PICKLEBALL



America's Fastest Growing Sport - See why everyone is enamored with this fun-filled court activity! Classes of varying skill levels open to participants ages 12+. Sessions conducted in a group setting. Students should wear tennis/court shoes and bring a bottle of water. Paddles and balls will be provided.

Don't be left out of the pickleball craze. Not only will you learn the rules of this engaging game, you will get out of the house, stretch your limbs, and build new friendships!

**INTRODUCTION TO PICKLEBALL** (Level 0) - Intended for those who have zero knowledge or experience playing pickleball. \$25 fee. (Includes \$25 promotional credit\*)

**Mondays:** 9:00 am - 11:00 am at Rec 3  
5:00 pm - 7:00 pm at Rec 3

**PICKLEBALL BASICS** (Level 1) - Intended for those who have completed Level 0 or have some pickleball experience and are playing at a beginner level. February 1, 8, 15, and 22. 4 classes - \$60

**Tuesdays:** 10:00 am - 11:00 am at Rec 3

**PICKLEBALL NOVICE** (Level 2) - Intended for those who have pickleball experience and would like to develop their skills and game strategies. February 2, 9, 16, and 23. 4 classes - \$60

**Wednesdays:** 10:00 am - 11:00 am at Rec 3

**Instructor:** Jason Fujinaka

**Phone:** 808-542-8139

**Email:** jason@alwayspickleball.com

Contact Jason for more class options, including additional group classes or private lessons.

# FORD

Lic. #C-25781

## PAINTING PROFESSIONALS

RESIDENTIAL • COMMERCIAL • LICENSED • INSURED



## WE DO MORE THAN JUST PAINT YOUR HOUSE!

### SERVICES

- Carpentry
- Water rot restoration
- Interior & exterior painting
- Wall coverings, including wallpaper
- Deck sealing and restoration

### OTHER SERVICES

- Textured ceilings • Specialty coatings
- Paint removal • Pressure washing
- Plaster repairs

### FREE ESTIMATE

**\$500 OFF**

+ \$200 OFF For Veterans

+ \$150 OFF For Seniors

Whether you need work on new construction or some minor remodeling,

### FORD PAINTING PROFESSIONALS

can do it! Locally owned and operated. Great pricing, service, and our knowledgeable staff works with you at your convenience.

### START TO FINISH WE DO THE JOB RIGHT

Call on us ANYTIME for a FAST & FREE estimate!



**808-216-0272**

**WWW.FORDPAINTINGPROSINC.COM**



## TENNIS



Get active and have fun with tennis! Players of all levels are welcome - we'll guide you through getting started with the right equipment, learning the rules of play, and playing for fun, or on a competitive level. All lessons are held at Rec 3.



**Tennis with Rick Aquino**  
Phone: 808-486-5270  
Tuesday: 3:00 pm - 9:00 pm\*  
Thursday: 3:00 pm - 9:00 pm\*  
Saturday: 9:00 am - 9:00 pm\*



**Tennis with Rich Sotelo**  
Email: [tennisuer@gmail.com](mailto:tennisuer@gmail.com)  
Mon, Wednes, Fri, Sun:  
7:00 am - 9:00 pm\*  
Group & Private Lessons Available  
By Appointment Only.

## DANCE/CREATIVE MOVEMENT/BALLET

**RETURN DATE: FEBRUARY 2022**



**HIP HOP & CONTEMPORARY DANCE** - Introduces children to two different popular, but different genres of dance using a variety of music styles and songs that are child friendly.

Saturday: 1:00 pm - 2:00 pm at Rec 1

**CREATIVE MOVEMENT** - Beginning level of exploration with practice of the basic dance elements and pre-ballet for ages 3 to 5. Let your child discover the beauty and joy of self-expression through dance.

Friday: 3:00 pm - 4:00 pm at Rec 1  
Saturday: 9:30 am - 10:30 am at Rec 1

**BALLET** - Ballet is a beautiful system of body awareness. It develops an adaptive body that can move with both strength and grace.

**Ballet 1 (Ages 6 to 9)**  
Friday: 4:00 pm - 5:00 pm at Rec 1  
Saturday: 10:30 am - 11:30 am at Rec 1

**Ballet 2/3 (Ages 9 to teens)**  
Friday: 5:00 pm - 6:30 pm at Rec 1  
Saturday: 11:30 am - 1:00 pm at Rec 1

Instructor: Laura Kunimura  
Phone: 808-228-3743  
Email: [danceisle@aol.com](mailto:danceisle@aol.com)  
[www.danceisland.net](http://www.danceisland.net)

## WOMEN'S EXERCISE

**RETURN DATE: TBA**



Enjoy a fun, low-impact exercise workout that's great for all ages.  
Mon, Wed & Fri:  
8:00 am - 9:00 am at Rec 3  
Instructor: Debbie Fajardo  
Call MTA at 808-623-7300  
Cost: \$3 per month for MTA Members

## JAZZERCISE



Jazzercise is a pulse-pounding, beat-pumping fitness program that fuses cardio with muscle toning resistance training, stretch and cool-down. A 60-minute full-body work out for all ages and fitness levels. Get moving to a heart-thumping hot music playlist that will leave you breathless, toned and coming back for more.

Monday: 6:30 pm - 7:30 pm at Rec 6  
Tues & Thurs: 6:15 pm - 7:15 pm at Rec 5  
Saturday: 8:30 am - 9:30 am at Rec 6

Instructor: Tammi Barboza  
Phone: 808-497-4299  
Email: [jazzerciseleeward@gmail.com](mailto:jazzerciseleeward@gmail.com)

## ZUMBA®

Combines Latin and International music with a fun and effective workout system. \$5 per class for MTA Members, \$6 for sponsored guests. Find us on Facebook at "MTA Mililani Rec Center 3 Zumba® Fitness Classes." Classes are inexpensive and lots of fun - join the Party!



**Zumba® with Shanna Barnes**  
808-726-0791  
[sheljam1296@gmail.com](mailto:sheljam1296@gmail.com)  
Thursday at Rec 6  
5:30 pm - 6:30 pm



**Zumba® with Noriko Mukk**  
808-348-7675  
[noriko.zumba@gmail.com](mailto:noriko.zumba@gmail.com)  
**RETURN DATE: TBA**

## DANCE CLUB FITNESS

**RETURN DATE: FEBRUARY 2022**



A fun, easy to follow high-energy exercise class with dance moves performed to the hottest hits across multiple genres. After cardio, bonus abs and stretch.

Monday: 7:15 pm - 8:15 pm at Rec 3

Instructor: Helena Sundberg  
Phone: 386-427-8407  
Email: [helenarsundberg@gmail.com](mailto:helenarsundberg@gmail.com)

## ALOHAFIT

**RETURN DATE: MARCH 2022**



**BOOTCAMP** - This is not your average Bootcamp class! Shake up your fitness routine with a heart-pumping session of fun, games, sweat and strength. Led by a Certified Personal Trainer our signature format is adjustable for all fitness levels and ages. Students are required to bring their own mats and weights. Space is limited, please reserve your spot online today!

Monday: 6:00 pm at Rec 3  
Wednesday: 6:00 pm at Rec 6

Instructor: Moria Nisbet  
Email: [moria@alohafitmililani.com](mailto:moria@alohafitmililani.com)  
[www.alohafitmililani.com](http://www.alohafitmililani.com)

Cost per class: \$10 MTA Members | \$12 non-members

## ROLL YOUR PAIN AWAY

**RETURN DATE: FEBRUARY 2022**



Open to all ages. Alleviate the symptoms of common musculoskeletal ailments with the Fascination Method of self-myofascial release. Developed by Founding Members of the Fascia Research Society, this class will enable you to understand why you have aches and pains and how to mitigate those pains with simple and effective techniques using a Fascinator Roller. Improve your flexibility, posture and circulation while learning about the largest organ system in the body...the FASCIA.

Tuesday: 9:00 am - 10:00 am at Rec 3  
Wednesday: TBA

Drop-ins are welcome.

Instructor: Anthony Chrisco  
Phone: 808-227-6221  
Email: [achrisco16@gmail.com](mailto:achrisco16@gmail.com)  
[www.thefascinator.com](http://www.thefascinator.com)

Bring a yoga mat and water and wear comfortable exercise clothes. Read our incredible testimonials at: [www.thefascinator.com](http://www.thefascinator.com).

Cost per class: \$15 MTA Members | \$16 non-members

## YOGA



Relaxing Vinyasa Flow yoga class to encourage flexibility and increased range of motion. Wear comfortable clothes and bring your personal yoga mat. No registration or prior yoga experience required.

Thursdays: 6:00 pm - 7:00 pm at Rec 6

Instructor: Judy Kosaka  
Phone: 808-371-8006  
Email: [beWell808@yahoo.com](mailto:beWell808@yahoo.com)  
[www.getfit808.com](http://www.getfit808.com)

Cost per class: \$10 per class

**MORE CLASSES ON PAGE 30**

# CONTRACTOR CLASSES

\*Red text indicates class changes. Class availability/location is subject to change.

## KARATE



A traditional program that promotes self-discipline, respect for others, self-control, self-confidence, focus, and physical fitness. Open to all ages.

Mon & Wed: 5:00 pm - 7:00 pm at Rec 1

Instructor: Richard Nelson  
Phone: 808-721-0507  
www.fskah.com

## QIGONG & TAI CHI



This class is designed for both beginning and experienced students, and includes a variety of practices and forms for balance, flexibility, focus, strength, relaxation and enhanced breathing techniques.

Students will learn Qigong Warmup, 8 Silk Brocades, Organ Cleansing/Detox, Yang style Tai Chi short forms, and Tai Chi stick in an active, fun and educational environment. Adults (and children under 18 accompanied by a parent or guardian) are welcome.

Tuesday: 6:00 pm - 7:00 pm at Rec 6  
Saturday: 10:00 am - 11:00 am at Rec 6

Instructor: Stuart Holloway  
Phone: 808-741-3650  
Email: Stuart@InnerycentreLLC.com  
www.InneryCentreLLC.com

## HAWAIIAN KAJUKENBO ASSOCIATION

RETURN DATE: TBA



A self-defense system incorporating Karate (Ka), Judo and Jujitsu (Ju), Kenpo (Ken) and Chinese Boxing (Bo). The program focuses on vital life skills including respect, discipline, focus, concentration, and confidence for the entire family.

### Little Dragons

Mon & Wed: 5:30 pm - 6:00 pm at Rec 5

### Youth

Mon & Wed: 6:00 pm - 7:00 pm at Rec 5  
Saturday: 9:00 am - 10:00 am at Rec 5

### Adults

Mon & Wed: 7:00 pm - 8:30 pm at Rec 5  
Saturday: 10:00 am - 11:00 am at Rec 5

### Weapons

Saturday: 8:00 am - 9:00 am at Rec 5

Contact: Jane Iversen  
Phone: 808-626-2807 | 808-222-3860  
hawaiiankajukkenbo.com

## JUDO

RETURN DATE: TBA



Are you interested in participating in an Olympic sport that is good for the mind, body and spirit? Mililani Judo Academy has been helping the Mililani community develop confident, respectful citizens since 1973. You will learn self defense, get a great workout, and have fun participating in a lifelong activity that the whole family can enjoy. Come join us!

Tues & Thurs: 5:00 pm - 7:00 pm at Rec 1

Sensei: Richard Oshiro  
Phone: 808-265-2590

## STEVENSON KENPO KARATE

RETURN DATE: MARCH 2022



Offering the following two adaptable and effective martial arts systems for male & female students 12 years old and over. Take the opportunity and participate in some classes without obligation or commitment.

### (1) KAJUKENBO SELF-DEFENSE SYSTEM:

Composed of the best techniques from five different martial arts: Karate (Ka), Judo and Jujitsu (Ju), Kenpo (Ken), and Chinese Boxing (Bo). The program focuses on building vital skills, such as, discipline, respect, self-control, self-confidence, focusing, concentration, goal-setting and commitment. Martial arts is a great foundation builder for physical fitness and self defense skills.

Tues & Thurs: 7:30 pm - 8:30 pm at Rec 5

### Practice Sessions

2nd & 4th Saturday of the month  
12:00 pm - 2:00 pm at Rec 5



### (2) DYNAMIC STREET S.M.A.R.T.

#### SELF-DEFENSE SYSTEM:

Self-Preservation (S.) Martial Arts (M.A.) Reactionary (R.) Tactics (T.). A no frills self-defense system based on martial arts and military fighting skills used by elite forces around the world, modified for street survival. This system teaches simple, practical, and effective hand-to-hand & multiple weapons self defense skills that will end a confrontation with skilled opponents in seconds.

Tues & Thurs: 7:30 pm - 8:30 pm at Rec 5

### Practice Sessions

2nd & 4th Saturday of the month  
12:00 pm - 2:00 pm at Rec 5

Instructor: Chuck Stevenson  
Phone: 808-623-6399  
facebook.com/StevensonKenpoKarate

## CLUBS & ORGANIZATIONS

### NOTICE REGARDING CLUBS & ORGANIZATIONS MEETING INDOORS:

- Masks must be worn at all times.
- No food or drinks.
- No fitness activities.

### MILILANI GARDEN CLUB

Created to promote and participate in community projects where possible, by providing education in horticulture, conservation, garden design, and the art of flower arrangement.

Meetings: 3rd Thursday of the month (Sept - May)  
9:30 am - noon at Rec 2

Contact: 808-623-6287

### BOY SCOUTS OF AMERICA

A program that builds character, trains in the responsibilities of citizenship, and develops personal fitness.

TROOP #164 | Thursdays | 7:00 pm - 8:30 pm | Rec 3  
Contact: Dan Dorado | dkdorado@gmail.com

TROOP #664 | Fridays | 7:00 pm - 9:00 pm | Rec 2  
Contact: Eric Alquisa | 808-561-4505  
scoutmaster@troop664.org

TROOP #664 for Girls  
Contact: Anson Chan | 808-256-8318  
troop664gscoutmaster@gmail.com

### VENTURE CREW BOY SCOUTS OF AMERICA

A youth development program of the Boy Scouts of America for young men and women who are 14 years of age OR 13 years of age and have completed the eighth grade and under 21 years of age. Venturing's purpose is to provide positive experiences to help young people mature and to prepare them to become responsible and caring adults, with an emphasis in adventure, leadership, personal growth, and service.

Meetings: 2nd & 4th Tuesday of each month  
6:30 pm - 9:00 pm at Rec 3 (Starts at 7:00 pm)

Contact: Stuart Lai | 808-369-7673  
mililaniventurecrew@gmail.com  
scouting.org/venturing

### ROTARY CLUB OF MILILANI SUNRISE

Zoom Meetings - Wednesdays at 7:30am  
Contact: Paul Nakachi, Pres.  
exlender808@outlook.com

### GIRL SCOUTS RAINBOW SERVICE UNIT

Girl Scouting builds girls of courage, confidence, and character, who make the world a better place.

Contact: Jennifer Frisbee | 808-429-6201  
rainbow.serviceunit612@gmail.com

### MILILANI LIONS CLUB

We help where help is needed in our own communities and around the world, with unmatched integrity and energy.

Contact: Michael Magaoay 808-428-3736

### DISABLED AMERICAN VETERANS CHAPTER #4

The Disabled American Veterans helps vets get everything your sacrifices earned, while ensuring that you and your family receive the best this country has to offer.

Contact: Roy Brown | 808-623-8884

### ALOHA AQUATICS

Contact: Mr. Kenessey | president@alohaquatics.org



See our ad on page 18 for a special offer!



**Quality  
Painting**

Residential & Commercial Painting  
Interior & Exterior Painting  
Carpentry & Drywall Repairs  
Concrete Restoration

**FREE ESTIMATES**

**808-625-9411**

cbqpainting.com

Bonded & Insured • Lic #C-26872



## SAL'S GARDEN CARE & HOME REPAIR

Since 1984 — Oahu & Big Island — Insured

- GARDENING: Scheduled Maintenance & Single Jobs
- IRRIGATION: Design, Repair & Installation
- LANDSCAPE LIGHTING: Repair & Installation
- HANDYMAN SERVICES: Carpenry, Painting, Tiles, & Masonry

Up to \$1000

Phone: (808)348-0362 Email: SalBallesteros@aol.com

## OAHU DOORS

Ace Installation and Repair

- Broken Springs & Cables Replaced
- Residential Garage Doors & Openers
- Carport Enclosures
- Servicing All Makes & Models

**(808) 625-5759**

oahugaragedoors.com

GENIE

Amarr

Residential

LiftMaster

Commercial

VISA

## HOUSEPROUD INC

Cleaning Services Since 1982

Residential • Commercial • Vacation Rentals

Qualified professionals who take  
great pride in our work all of which is

**GUARANTEED!**

We work  
to your  
satisfaction!

Member of the BBB  
Fully Insured

Call  
**808-623-8185**

Best to email:  
scorpio2175@gmail.com

First time service gets 5%  
discount on a minimum of \$135.  
Hire us for work and refer a  
customer and receive \$20 bonus  
if we are hired.



houseproud.com

## TUTORING

Individualized Instruction • References Available



**JIMMY CASTRO**  
DBA LA'A KEA TUTORING SERVICE

**MATH • SCIENCE • SAT/ACT**

**808-295-2574**

jcastro808@gmail.com

HAWAII TUTOR.NET

## WORK FOR MTA

EMPLOYMENT OPPORTUNITIES AVAILABLE!

SEE PAGE 8 OR MILILANITOWN.ORG  
FOR MORE INFORMATION



Lic. #C-31989

Commercial • Residential  
High Rise • Townhomes  
Licensed & Insured

**FREE ESTIMATES**

**(808) 927-8339**

rman428@gmail.com

**Robert Man**  
Owner



**Specializing In...**

- Additions
- Renovations
- General Home Repairs
- Interior & Exterior Painting
- Kitchen & Bath Remodels
- Plumbing & Electrical Services

For a Free Estimate Contact Roger

**(808) 368-5628**

roger\_inlineconstruction@yahoo.com

Mililani Business Owner

INLINE-CONSTRUCTION.COM

FOR MTA MEMBERS



# CONSOLIDATED THEATRES



**\$8.50**

**MOVIE TICKETS**

Buy your ScreenSaver movie tickets at  
the MTA Admin Office or Business  
Offices at Rec 3 & 7. Present the tickets  
at the Mililani 14 Theatres box office, or  
other participating Consolidated  
Theatre locations, for admission.

Not valid for "No Pass" engagements.  
ScreenSaver tickets do not expire.

Visit consolidatedtheatres.com for show times & movie information.

Time to Paint Your Home?

## FORD PAINTING PROFESSIONALS

"It Costs Less to do it Right the First Time!"

- Residential & Commercial
- Remodeling & Repairs
- New Construction
- Wall Covering
- High Rise
- Town Home
- Housing
- Track Home

**808-216-0272**

Licensed & Insured

Fax #626-7199

Lic. #C-25781



www.fordpaintingprosinc.com



LET'S BRING THE CHEER THIS  
**NEW YEAR!**

PERSONAL LOANS AS LOW AS

**2.022%**  
**APR\***  
1 YEAR TERM  
UP TO **\$5000**

**APPLY AT** OR TEXT US AT  
**PEARLHAWAII.COM** 808.218.6271  
OR CALL US AT  
808.737.4328



pearlhawaii.com | 808.73.PHFCU (808.737.4328) | WAIPIO | EWA | AIRPORT | PEARL HARBOR | HONOLULU | WAIANAE

\*Annual Percentage Rate (APR). The loan rates advertised are "A" Tier loan rates in our Multi-Tiered Loan Rate Program. Other rates and terms are available. Other terms, conditions, and restrictions may apply. Visit any of our branches for more information. May not be used for a business loan. Borrower must be 18 years of age or older. Promotion is subject to change or cancellation without prior notice. Offer expires 3/31/2022. Refinances of existing Pearl Hawaii Personal Loans and Lines-Of-Credit do not qualify for this offer. Payment example: \$1000 for 12 months at 2.022% APR is 12 estimated payments of \$84.25. Federally insured by NCUA.



learn more + apply